

# Childcare Sufficiency Assessment

Refresh March 2012

Gateshead Council

## Index

Introduction	page 3
Demographic Context	page 3
Tax Credits	page 3
Current economic Climate 2011	page 4
Jobs	page 5
JSA claimant count	page 6
Job Gains	page 7
Childcare Context	page 8
(Tables)	
Number of Providers and Places offered 2011- March 2012	page 9
Number of Providers per Neighbourhood Management Area	page 9
Number of Places per Neighbourhood Management Area	page 9
Table showing vacancies according to provision type in Gateshead	page 9
Number of Providers ended/resigned and started 2011	page 10
Costs according to provision type – Gateshead	page 10
Childcare costs in Britain 2012 (and percentage change)	page 10
Grants to PVI Settings	page 10
3 and 4 Year Old Free Entitlement	page 11
2 year old free entitlement	page 12
Role of the FIS	page 13
Schools	page 15
Holiday provision	page 15
Disabled children and children with additional needs	page 17
Next steps	page 18

## Introduction

As part of its statutory duties under the 2006 Childcare Act, Gateshead Council carried out a full audit of Childcare Sufficiency in the last quarter of 2010, publishing the assessment in March 2011. The full assessment can be viewed on the Gateshead Council website:

<http://www.gateshead.gov.uk/DocumentLibrary/Education/Strategies/csa/ChildcareSufficiencyAssessment.pdf>

This 'Refresh' report provides an update on changes affecting the childcare market and will be used alongside the last full assessment of Childcare Sufficiency to inform planning and ensure sufficient childcare is available across Gateshead, to meet the needs of working parents/ carers and those accessing training, where reasonably practicable.

The data used to inform this refresh largely covers the period 1<sup>st</sup> January 2011 to 31<sup>st</sup> December 2011.

## Demographic Context

Based on ONS\* Mid-Year Population Estimates for 2009

Age Range	Estimated number of children
0-1 years	4592
2 years	2184
3-4 years	4100
5-7 years	5857
8-10 years	6078
11-14 years	8656
Total	31467

\*(ONS – Office for National Statistics) {detailed child breakdown not available for 2010}

## Analysis of child numbers at Neighbourhood Management Area Level

Age Range	Neighbourhood Management Area					Total
	Central	East	Inner West	South	West	
0-1 years	1079	778	764	947	1024	4592
2 years	473	421	369	453	468	2184
3-4 years	844	751	654	943	908	4100
5-7 years	1191	1107	956	1368	1235	5857
8-10 years	1133	1108	1004	1439	1394	6078
11-14 years	1542	1588	1431	2082	2013	8656
Total	6262	5753	5178	7232	7042	31467

## Tax Credits

Tax credits are a flexible system of financial support designed to deliver support as and when a family needs it, tailored to their specific circumstances. They are part of wider government policy to provide support to parents returning to work, reduce child poverty and increase financial support for all families. The flexibility of the design of

the system means that as families' circumstances change, so (daily) entitlement to tax credits changes. This means tax credits can respond quickly to families' changing circumstances, providing support to those that need them most. As illustrated in the table below, figures have decreased from 1.5 (thousand) in 2010 to 1.3 (thousand) in 2011.

Recipient families receiving Child or Working Tax Credit in each country and region in England, December 2011 and in Gateshead December 2010

Area names	With children							With no children	Total families	
	Out-of-work		With CTC more than the family element		With CTC at or below the family element		Childcare element			
	Families	Children	Families	Children	Families	Children	Families	Number		
UK	1,435.4	2,734.0	2,695.6	5,024.0	1,000.0	1,402.6	448.7	565.9	5,697.0	
North East	68.5	125.2	121.3	216.0	44.9	60.9	19.0	33.5	268.3	
Gateshead	5.1	9.2	8.7	15.8	3.8	5.0	1.3	2.6	20.2	

Thousands

Dec 2010 Gateshead	5.3	9.5	8.9	15.8	5.6	7.9	1.5	2.7	22.4
--------------------	-----	-----	-----	------	-----	-----	-----	-----	------

Current economic Climate 2011

Gateshead is a metropolitan borough with close links to the surrounding local authority areas. The demands for childcare are related, for the most part, to the demands from working parents. The overall and local economic climate therefore has a potential major impact on the childcare market

Business

Following a tentative recovery from what was arguably the worst recession since records began, 2011 has been a year of weak economic growth internationally. The continuing economic uncertainty, especially within the Euro zone, has affected global business confidence.

Gateshead is part of the North Eastern Local Enterprise Partnership (NELEP) 'functional economic area', comprising Tyne & Wear, Northumberland and Durham. It is important to understand and consider the social and economic implications this has for Gateshead and its residents, particularly around commuting to other areas for work. Therefore, economic growth seen within the wider NELEP area may contribute to the demand for childcare in Gateshead. Recent economic growth predictions,<sup>1</sup> suggest that in the 2010-2030 period there will be growth of around 20,000<sup>2</sup> jobs across Gateshead and Newcastle, with around 5,000 of these being in Gateshead.

Gateshead's business base comprises of mainly small businesses, with 86% of firms employing fewer than 20 people, although 2.2% of businesses employ more than 100 people, compared to a national average of 1.5%. In 2010, there were 5,065 active businesses in Gateshead, with business births being significantly below the number of

<sup>1</sup> ONS- 2008 with further collaboration provided by Cambridge Econometrics/St Chad's Coll. Durham

<sup>2</sup> ONS/Cambridge Econometrics

deaths. Since 2004, the business base has grown by 9% or 420 businesses. One-year survival rates have been over 90% since 2004, from 91.8% in 2008 to 93.5% in 2010.<sup>3</sup>

In 2000, around 5,000 people were self-employed, this increased to 8,400 in March 2010. Statistics to date for 2011 suggest that this dropped to 7,500. It should be noted that these figures fluctuated considerably, as in the year to March 2011, they had been as low as 6,600<sup>4</sup>.

There were 953 new business bank accounts registered in Gateshead during the first nine months of 2011, a 1.4% increase in the corresponding period of 2010. However, Gateshead's rate of new bank account registrations is less than half that of Durham, and much less than Northumberland, Newcastle and Sunderland.

The vast majority of Gateshead's employment space is industrial (91%), with office use accounting for just 9%, the lowest proportion in Tyne and Wear. This suggests an unbalanced economy. The prime retail location is MetroCentre<sup>5</sup>.

### Jobs

Gateshead has around 99,000 jobs. The number of jobs/working age population (or Job density) is 0.80, which is much higher than the regional and GB average<sup>6</sup>, illustrating the borough's ability to attract and create jobs.

Despite spending cuts, the public sector continues to be a major part of the local employment base, although in overall terms the public sector has a smaller proportion of local jobs than in many other areas<sup>7</sup>.

There were 954 notified vacancies in the borough in December 2011<sup>8</sup>, which is significantly less than the 1,572 of three years ago in December 2007. Whilst regionally there were around 10,000 vacancies in December 2011, this compares unfavourably to the 17,500 of December 2007, clearly illustrating the continuing economic difficulties facing the area.

Whilst manufacturing is expected to continue to contract, it will be at lower rate and will continue to provide a substantial proportion of employment. Therefore, ongoing diversification and the growth of new manufacturing sectors remain essential to the borough's economic success.

Gateshead's population is 191,700<sup>9</sup>, which has reduced by 21,000 since the 1980's (213,000). An ageing population raises issues regarding the long-term ability of the borough to meet labour supply needs.

Numbers of people receiving out of work benefits is also an issue, with those in receipt of Job Seekers Allowance rising sharply in 2011 to 6,336<sup>10</sup>, back to the levels seen at the height of the recession and more than double the 3,080 figure seen in November 2007. High numbers of JSA claimants clearly illustrates a lack of suitable

---

<sup>3</sup> ONS – Business Demography 2010 (latest available data)

<sup>4</sup> ONS Annual Population Survey via NOMIS – January 2012

<sup>5</sup> Employment Land Review (LDF) – Nathaniel Litchfield and Partners December 2009 – pg 35

<sup>6</sup> Office of National Statistics – 2009

<sup>7</sup> ONS data, including APS, Labour Force Survey etc 2008-2010

<sup>8</sup> Job Centre Plus notified vacancies December 2011

<sup>9</sup> 2010 Mid year population estimates – Office for National Statistics

<sup>10</sup> NOMIS JSA Claimant count – December 2011

employment opportunities; wider issues such as ill health also highlight the structural difficulties within the workforce. Currently 11,140 claim Incapacity Benefit (IB)/Employment Support Allowance (ESA) in Gateshead, which when added to those claiming JSA (and a small number of other benefits) means that almost 24,000<sup>11</sup> people, 1/6 of the working age population, are claiming out of work benefits.

There is therefore a need to tackle worklessness, improve skills levels and attract talented people to satisfy (and support) the predicted long-term growth in employment. A substantial element of this is to help people who are of working age but not in work, such as those in receipt of out of work benefits (including IB/ESA) to, where possible, return to work. This will help ensure that businesses have the workforce to meet their operational requirements, reduce the take up of benefits and improve competitiveness and productivity in the local economy. Gateshead has high levels of benefit claimants, which continue to influence poor economic performance.

The Jobseekers Allowance claimant count for Gateshead has shown a small increase during 2011 with the proportion of people claiming JSA creeping up from 4.8% to 5.1%. This has not increased as quickly as it has in the North East region which has gone from 4.9% to 5.3%. According to figures from NOMIS around 16% of JSA claimants have child dependants compared to 44% of Income Support claimants.

The table below shows the JSA claimant count and proportion as a percentage of population for Gateshead, the North East and the UK:

#### JSA claimant count

Date	Gateshead	North East	United Kingdom	Gateshead	North East	United Kingdom
January 2011	5,886	83,936	1,505,068	4.8	4.9	3.7
February 2011	6,108	85,031	1,538,187	4.9	5.0	3.8
March 2011	6,009	83,905	1,526,946	4.9	4.9	3.8
April 2011	6,289	84,610	1,520,806	5.1	5.0	3.8
May 2011	6,207	83,317	1,504,913	5.0	4.9	3.7
June 2011	5,997	82,225	1,493,077	4.8	4.8	3.7
July 2011	6,090	84,975	1,541,793	4.9	5.0	3.8
August 2011	6,309	86,625	1,576,835	5.1	5.1	3.9
September 2011	6,349	88,155	1,578,609	5.1	5.2	3.9
October 2011	6,319	87,422	1,562,501	5.1	5.1	3.9
November 2011	6,290	87,826	1,558,756	5.1	5.2	3.9
December 2011	6,336	89,374	1,568,849	5.1	5.3	3.9

As at May 2011 there were 8,480 people claiming Incapacity benefit or Severe Disablement Allowance and 2,840 claiming Employment and Support Allowance. As the reassessment of Incapacity Benefit continues we will see more people move from IB/IS on to ESA. ESA claimants are divided into two groups based on the outcome of their Work Capability Assessment, the Work Related Activity Group or the Support Group. People who are found ready for work right away will have to make a claim to Jobseekers Allowance.

<sup>11</sup> NOMIS – Out of work benefit claimants – May 2011

Income related benefits such as Income based JSA, Income related ESA, Housing Benefit, Income Support and Tax Credits will be replaced by the new Universal Credit. New claims to Universal Credit are expected to begin in late 2013, with all existing claims being transferred to the new system by the end of 2017. Payments of Universal Credit will be monthly in a single payment.

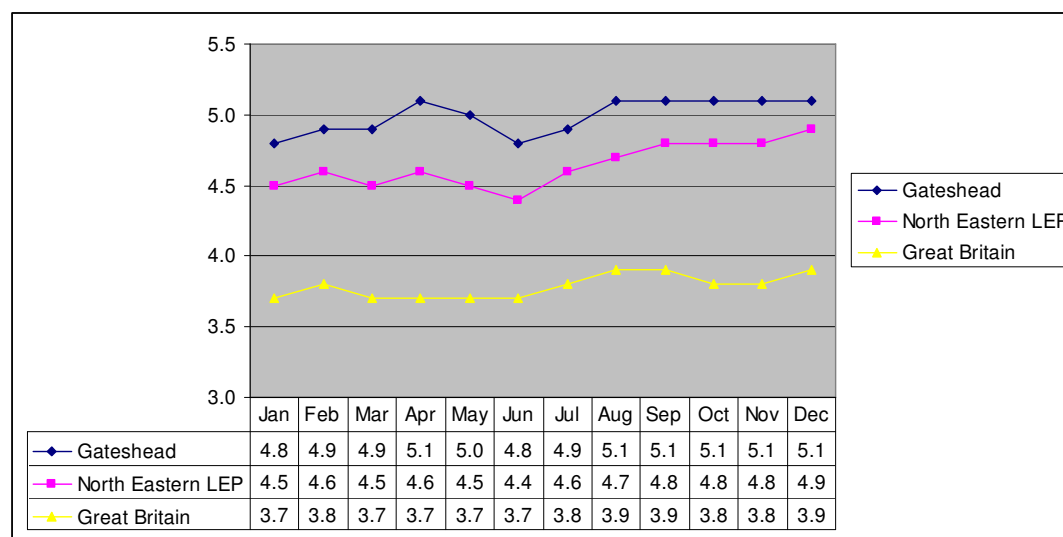
### Vacancies notified to Jobcentre Plus in 2011

Date	Gateshead	North East	Great Britain
January 2011	851	10,616	233,983
February 2011	1,562	14,311	295,494
March 2011	1,135	13,150	291,164
April 2011	1,175	17,327	370,714
May 2011	732	10,828	247,038
June 2011	1,291	15,551	302,859
July 2011	1,474	18,077	384,258
August 2011	1,161	14,833	325,466
September 2011	954	14,713	346,042
October 2011	2,172	19,824	477,965
November 2011	1,292	14,660	368,162
December 2011	1,172	12,531	316,437

### **Unemployment Claimant Count – Jobseekers Allowance (JSA) Claimants 2011**

*(Expressed as a proportion of the resident population of working age (16-64))*

Source: Office for National Statistics



As the above chart shows, Gateshead and the NELEP area have substantially higher levels of JSA claimants than that of Great Britain.

### Job Gains

Future regeneration of local town centres is an essential part of developing services within communities and maintaining neighbourhood sustainability. Proposals are in place to develop Felling, Blaydon & Birtley Town Centre, creating in excess of 500 new jobs across the three areas, specifically, a new Morrison's supermarket in

Birtley creating 250 jobs. In addition to this, the Trinity Square development in Gateshead's town centre is set to create over 1,000 new jobs.

Additional retail facilities have created further jobs elsewhere in the borough, including 65 at Marks and Spencer's Simply Food store at Retail World on the Team Valley Trading Estate, and 80 at the new Asda Living store due to open at Retail World.

Other areas of development include Baltic Business Quarter and Gateshead Quays where the construction of the Northern Design Centre has brought a £5.75m boost to the region's construction industry by providing work for 35 North East firms. The project is expected to generate around 150 jobs in the creative and digital sector when new businesses move into the building. On Gateshead Quays, two new hotels have and are nearing completion. Jury's Inn opened in August 2011 and created 80 jobs and the Ramada Encore, a 202-bed three-star hotel due to open in March 2012, is currently carrying out recruitment.

The development of the North Eastern Enterprise Zone (EZ), although not based in Gateshead, offers opportunities for the people and businesses of the borough. Proposals include; growth of low carbon industries, especially in SE Northumberland. On the North banks of the Tyne a development of a new technology park on a site next to Nissan will be within easy reach of Gateshead commuters and may create trading opportunities for Gateshead businesses.

### Childcare Context

The past 12 months has seen a number of significant changes in the childcare market.

The Gateshead Cheder Primary School, a Jewish Independent Boys' Primary School is now offering free nursery entitlement and is registered for 19 (ages 3-5), Monday – Friday and Sunday.

Gateshead Jewish Nursery and Out of School Club has opened Shira Daycare which offers 31 places for children up to 3 years, Monday – Friday and Sunday. Both of these provisions are in the Central area of Gateshead.

Kids 1st Day Nursery is about to open in the South of Gateshead. It offers 108 places for children aged under 8 from Monday to Friday.

In September 2011, the 5 Children's Centre Nurseries previously run by the Local Authority, were transferred to 4Children, following a lengthy process of consultation with parents, staff and unions. As a result of this change, the nurseries have had the cap on number of places removed, so are offering more places than in the previous year. These provisions are open from Monday to Friday.

Two current childminders have developed their businesses to open as day nurseries, one in the South and the other in the West of the borough. These offer 22 and 26 places for children under the age of eight from Monday to Friday.



## Number of Providers and Places offered 2011- March 2012

<b>Provider Type</b>	<b>No. of Providers 2010</b>	<b>Places Offered 2010</b>	<b>No. of Providers 2011</b>	<b>Places Offered 2011</b>
Day Care	22	1810	27	1888
Pre School	25	686	25	635
Breakfast Club	22	741	21	717
Out of School Club	25	893	27	876
Holiday Club	16	559	15	521
Childminders	148	805	156	829

## Number of Providers per Neighbourhood Management Area

<b>Type of Provider</b>	<b>West Area 2010</b>	<b>West Area 2011</b>	<b>Inner West Area 2010</b>	<b>Inner West Area 2011</b>	<b>East Area 2010</b>	<b>East Area 2011</b>	<b>South area 2010</b>	<b>South Area 2011</b>	<b>Central area 2010</b>	<b>Central Area 2011</b>
Day Care	4	5	3	3	2	2	6	7	9	10
Pre School	7	10	6	5	1	1	7	7	1	2
Breakfast Club	7	4	7	7	3	4	5	4	2	2
Out of School Club	7	6	9	8	3	3	5	5	4	5
Holiday Club	5	4	6	4	0	1	3	1	5	5
Childminders	46	49	25	24	26	25	33	42	21	16
<b>Total</b>	<b>76</b>	<b>78</b>	<b>56</b>	<b>51</b>	<b>35</b>	<b>36</b>	<b>59</b>	<b>66</b>	<b>42</b>	<b>40</b>

## Number of Places per Neighbourhood Management Area

<b>Type of Provider</b>	<b>West Area 2010</b>	<b>West Area 2011</b>	<b>Inner West Area 2010</b>	<b>Inner West Area 2011</b>	<b>East Area 2010</b>	<b>East Area 2011</b>	<b>South area 2010</b>	<b>South Area 2011</b>	<b>Central area 2010</b>	<b>Central Area 2011</b>
Day Care	199	220	255	271	133	108	393	479	961	810
Pre School	170	260	116	110	21	21	200	205	30	40
Breakfast Club	151	132	230	230	74	106	79	161	88	88
Out of School Club	212	193	280	250	94	80	225	175	174	178
Holiday Club	142	105	200	150	0	30	124	52	154	184
Childminders	242	259	132	133	133	128	169	229	92	80
<b>Total</b>	<b>1,116</b>	<b>1169</b>	<b>1,213</b>	<b>1144</b>	<b>455</b>	<b>473</b>	<b>1,190</b>	<b>1301</b>	<b>1,499</b>	<b>1380</b>

## Table showing vacancies according to provision type in Gateshead

<b>Type of Provision</b>	<b>% with vacancies</b>	<b>% without vacancies</b>
Day Care	90.5	9.5
Pre School	97.3	2.7
Breakfast Club	80	20
Out of School Club	80	20
Holiday Club	50	50
Childminders	48	52

## Number of Providers ended/resigned and new Providers Jan 2011-March 2012

Provider Type	Ended	Started
Day Care	5	11
Pre-School	0	0
Out of School Club	2	0
Holiday Club	1	0
Childminders	17*	23*

\*(Childminder figures include proposed childminders, who may never become active childminders but will be included in ended and started figures.)

## Costs according to provision type - Gateshead

Provider Type	Costs 2010	Costs 2011	% change
Day Care	£34.89 (day)	£36.97 (day)	+6%
Pre School	£8.92(session)	£9.02(session)	+1.3%
Breakfast Club	£3.89 (session)	3.95(session)	+1.5
Out of School Club	£7.25 (session)	7.49(session)	+3.3
Holiday Club	£9.25 (session)	13.47(session)	+45.6
Childminders	£3.44 ((hour)	£3.65 (hour)	+6.1%

The growing gap between the cost of a nursery place and parents' earnings is revealed in the annual childcare costs survey (Report from The Daycare Trust Feb 2012)

Childcare costs in Britain 2012 (and percentage change)						
Region	Nursery (under 2)	Nursery (2 and over)	Childminder (under 2)	Childminder (2 and over)	Out-of-school club (15 hours)	Change in earnings
London	£126.80 7%	£112.24 -0.6%	£129.59 9.1%	£129.02 11.1%	£47.48 9.8%	0.5%
England (regional average)	£103.19 6.7%	£98.75 5.1%	£92.61 3.1%	£91.83 3.9%	£45.81 1.7%	-0.2%
Scotland (average)	£101.49 1.9%	£4.52 -3.1%	£93.10 3.8%	£92.04 5.0%	£48.55 -1.9%	3.9%
Wales (average)	£92.35 1.7%	£89.33 0.0%	£92.96 3.1%	£92.06 2.7%	£40.05 2.1%	4.0%
Britain (average)	£102.05 5.8%	£97.51 3.9%	£92.68 3.2%	£91.87 3.9%	£45.53 1.4	0.3%

## Grants to PVI Settings

In 2011/12, the local authority was able to offer small grants to support PVI settings again. A new places grant of up to £5,000 was intended to support new providers with their set up revenue costs, and a sustainability grant of up to £3,000 was available to settings in financial difficulty to ensure that they remain sustainable. The following tables show how the grants were allocated in 2011/12:

<b>New Places Grant</b>		
<b>Area</b>	<b>Provider Type</b>	<b>Amount</b>
Central	Nursery	£5,000
South	Nursery & Out of School	£5,000
<b>Total 2011/12</b>		<b>£10,000</b>

<b>Sustainability Grant</b>		
<b>Area</b>	<b>Provider Type</b>	<b>Amount</b>
West	Out of School	£3,000
West	Pre-School	£3,000
Inner West	Pre-School	£3,000
South	Out of School	£3,000
<b>Total 2011/12</b>		<b>£12,000</b>

At the time of writing, it is unlikely that the Council will be able to offer these grants in 2012/13.

All of the Day nurseries, Pre-Schools, Breakfast clubs, Out of School clubs and Holiday Clubs state that they will be sustainable in the coming year. The majority of Childminders who responded, (96%) state that they will be sustainable in the coming year.

### 3 and 4 Year Old Free Entitlement

In December 2011 the number of providers on the register to deliver this offer was as follows:

<b>Type of Provider</b>	<b>Number</b>
Childminders	5*
Pre-Schools	24
Day Nurseries	22
Maintained Nursery Schools	1
Nursery Class in Maintained Primary Schools	43

\* currently no children are accessing free entitlement with childminders

In Gateshead, provision is split between PVI and maintained, the percentages are demonstrated below. The uptake of 3 year olds is 95% and 4 year olds is 96%.

Take Up of Free Early Years Places for 3 and 4 Year Olds – January 2011

No. Benefiting from Some Free Early Education

	<b>PVI</b>	<b>% of children accessing Free Early Education in PVI sector</b>	<b>Maintained</b>	<b>% of children accessing Free Early Education in Maintained sector</b>	<b>Total</b>
Gateshead	1,240	28.6	3,100	71.4	4,340
North East	9,970	17.5	46,920	82.5	56,890
England	491,266	40.4	726,054	59.6	1,217,320

Take Up of Free Early Years Places for 3 Year Olds - January 2011

No. Benefiting From Some Free Early Education

	<b>PVI</b>	<b>% of children accessing Free Early Education in PVI sector</b>	<b>Maintained</b>	<b>% of children accessing Free Early Education in Maintained sector</b>	<b>Total</b>
Gateshead	909	42.5	1,231	57.5	2,140
North East	7,740	27.5	20,360	72.5	28,100
England	365,447	60.8	236,110	39.2	601,557

Take Up of Free Early Years Places for 4 Year Olds - January 2011

No. Benefiting From Some Free Early Education

	<b>PVI</b>	<b>% of PVI Benefiting From Free Early Education</b>	<b>Maintained</b>	<b>% of Maintained Benefiting From Free Early Education</b>	<b>Total</b>
Gateshead	331	15.0	1,869	85.0	2,200
North East	2,230	7.7	26,560	92.3	28,790
England	125,819	20.4	489,944	79.6	615,763

\* Data extracted from DfE: Provision for Children Under 5 Years of Age in England Report - January 2011

2 year old free entitlement

In 2011 Gateshead Council funded 82 places for disadvantaged 2 year olds to access 10 hours of free nursery entitlement, term time only. In addition, a trial for a small number of children to access this entitlement with eligible childminders

commenced in January 2012. Eligibility for 2 year places in Gateshead is determined by benefits entitlement, and home post codes.

As of December 2011, the following places were taken up:

### 2 year places – December 2011

Area	Places taken up
East	25
Central	34
West	3
Inner West	10
South	9
Total	81

The Education Act 2011 has made it a statutory requirement for Local Authority's to provide 15 hours of free entitlement for disadvantaged 2 year olds. From September 2013, this will be for 20% of all 2 year olds, with eligibility criteria likely to be the same as those for free school meal entitlement. In Gateshead, this will equate to approximately 600 children. From September 2014, the offer will be extended to 40% of 2 year olds. The eligibility criteria is still to be determined.

Whilst this extension to the free entitlement offers considerable opportunity for childcare providers, and will benefit a significantly increased number of children and their families, it also presents challenges to develop sufficient high quality places. At the time of writing, no capital funding is available to support growth. Funding for places up until September 2013 is also determined at a local level from the Early Intervention Grant. The Childcare Support Team will be working with providers from the PVI and maintained sectors to develop a staged approach to growing this offer once further guidance is issued by the Department for Education.

### Role of the FIS

As part of its statutory duty under the 2006 Childcare Act, Gateshead's Family Information Service (FIS) provides information, advice and guidance to parents/ carers about a range of relevant services, including childcare. The FIS was restructured in April 2011. These changes are reflected in the services FIS provides.

### Enquiries

We have altered the way enquiries to Gateshead FIS are recorded and managed through the development of our Tribal enquiries module. We are able to record details of enquirers and the requests that are made. We can record what information is distributed and the way in which this information is sent. All enquiries are monitored and responded to appropriately. Enquirers receive a follow up call to ensure all their needs have been met in seeking the requested childcare and we use this information to produce Customer Satisfaction Reports.

We have implemented an increase in the quality of the information enquirers receive. All enquirers now receive a letter with table of contents of information requested along with 2 promotional publications. One of these regards Early Years

Services as a whole to increase awareness of the support available and the other provides helpful tips for parents / carers who are looking to access childcare.

We are better equipped to effectively signpost enquirers to key service providers who work towards achieving economic wellbeing following a training session on The Practitioners Toolkit.

### Information

The services on offer from our FIS team are more easily accessible, our information on Gateshead Council's website is regularly updated and we now have an on-line directory (Family Information Service on-line) located on the Gateshead Council site. Our team can now be contacted directly by telephone, e-mail or direct which allows a more efficient response.

### Leisure

We work with the Childcare Support Team to develop our directory. Our online directory includes information on:

Childcare  
Health Services  
General advice and support services  
Local family events and activities

The main emphasis for the following months is to provide links to support and advice services.

Our promotional leaflet has been updated and is in the process of being distributed to the following:

Schools  
Childcare Providers  
Health settings  
Health visitors  
Parent and Toddler Groups  
Libraries  
Leisure Centres  
Children's Centres  
Council Buildings  
Specialist children's retailers and party venues  
Supermarkets  
Job Centres  
Community Centres  
Arts and Music Venues

We have:

- communicated more efficiently to childcare providers, schools and staff through the regular Childcare News publication produced by the Childcare Support Team.
- completed / are completing our regular audits to ensure information we hold on our childcare providers is accurate and up to date.

- provided the Childcare Support Team with information required to carry out Welfare Requirement audits.
- supported the Training Function with regards to effective monitoring of grants and the provision of statistical information
- We have represented our Local Authority at regional meetings across the North East to share good practice information.
- supported Children's Centres to promote their activities / services through implementing minimum publicity standards produced by the Childcare Support team.

### Events

Links have been made with Jobcentre Plus, the FIS has been represented at Lone Parent Advisor sessions. These sessions will be running throughout 2012.

In addition FIS has attended a number of large events including:

- Gateshead Stadium – Inclusive Family Fun Day July 2011
- Toy Library 2<sup>nd</sup> birthday celebration – July 2011
- Play Day – August 2011

As a service we are developing our work to move towards a paperless system.

### Schools

A questionnaire was emailed to all the schools in Gateshead asking for information on all services and activities that were delivered on school premises that could be used as childcare by parents and carers. In addition, the Childcare Support Team were invited to attend 4 school cluster meetings, to promote the importance of schools' contribution to the Childcare Sufficiency agenda.

Schools were asked if any of their activities:

- lasted at least 1 hour either before or after the school day,
- were reliable, i.e. would continue to run in difficult circumstances, e.g. teacher/leader unable to attend,
- regular, i.e. at a definite date/ day and time for a stipulated number of sessions.

Of the 21 responses received, (61 were sent out, with a return rate of 34%) none gave any activities/events that could be used as a reliable source of childcare by parents or carers. Of these 21 responses, 16 ran breakfast clubs (77%) and only 5 (23%) did not.

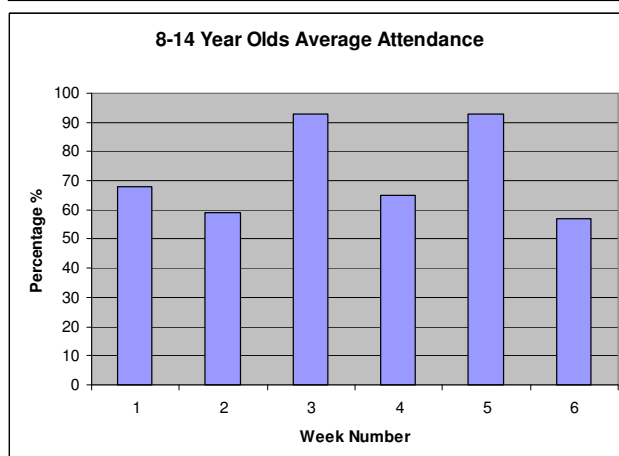
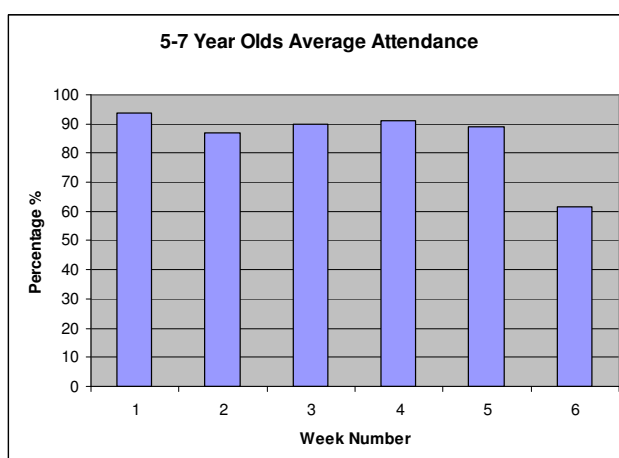
Of these responses, 12 (57%) ran various kinds of activities, usually after the school day with charges ranging from free to £3 per session. Many schools were reluctant to brand any of their activities as childcare, to advertise them or to promote them to parents/carers as such.

### Holiday provision

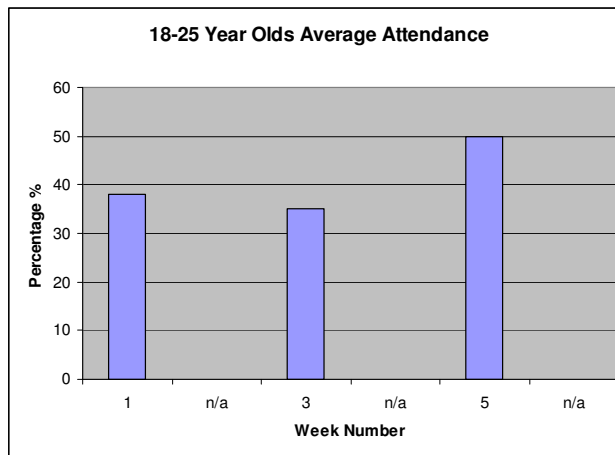
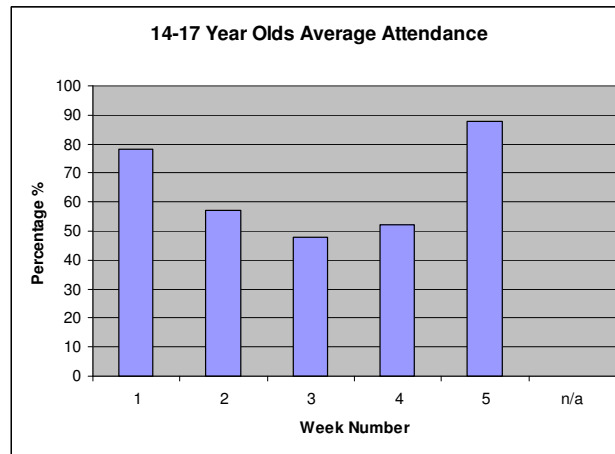
In summer 2011, Gateshead Council's Play Development Service operated Active Kidz, a fully inclusive activity scheme for all children and young people aged 5 – 19 years during school holidays. It provided young people with the opportunity to get involved in a wide range of fun and challenging activities including art, craft, drama, sport, games, music and dance.

There was also the opportunity for young people to join in with boxercise, trampolining and swimming as well as trips to other local attractions such as Clasper Towers Adventure Playground, Gibside National Trust, and Chopwell Woods. Every effort was made to include children and young people in all activities and the individual needs of the children were considered when planning activity programs. The schemes were delivered in all five of the neighbourhood areas across 16 venues.

### Attendance Summer 2011







Take up for 5-7 year olds was consistently high, with all sessions at Gateshead Leisure Centre fully booked, and a high occupancy across all venues. The programme at older age ranges predominantly provided for children and young people with disabilities, and did not operate for the full six weeks school holidays. In Summer 2012, the programme may look to deliver more places at Gateshead Leisure Centre in the Central Area, which was the only venue at full capacity in 2011.

Active Kidz runs 9:00am-3:30pm daily apart from bank holidays

The cost of Active Kidz 2010 was £50 per week, £40 for a 4 day week, £13 per day

The cost of Active Kidz 2011 was £60 per week, £48 per 4 day week, £15 per day.

This is an increase of 20% per week, 20% per 4 day week and 15.4% per day from 2010 prices.

### Disabled children and children with additional needs

In March 2012 there are 787 disabled children and young people aged 0 – 18 years registered on the Gateshead Children with Disabilities Network. It is thought that there may be many more who are not registered on the network; an exact number has been difficult to quantify. (source: Children with Disabilities Network)

Children and young people registered on Gateshead Children with Disabilities Network

<b>Age range</b>	<b>Number of Children Nov 2010</b>	<b>Number of Children March 2012</b>
0-1	9	8
2	7	7
3-4	38	38
5-7	100	101
8-10	170	171
11-14	244	248
15-18	188	214
Total	756	787

In January 2011 the number of Looked After Children aged under 18 years old in Gateshead was 324. In March 2012 the number was 373.

Next steps

Four detailed Action Plans were developed following publication of the CSA in March 2010. These plans identified actions to address gaps in provision highlighted by the CSA. They also detail actions required to develop childcare provision in line with changes at a national level. These action plans have been updated to reflect progress to December 2011, and are available on the Council website.

New action plans are being developed to direct future work. These will be published later this year, once further information about changes to the free entitlement for 2, 3 and 4 year olds are confirmed by the Department for Education.

The Department for Education has proposed replacing Childcare Sufficiency Assessments with a responsibility for local authorities to report annually to council members and to parents on how they are meeting their duty to secure sufficient childcare.