

# **COMMUNITY SAFETY**

Service Improvement Report  
2004/05

# Introduction

Gateshead Council has a vision for the future. It's about what we want to achieve to ensure a better future for all local people. We will realise our aims through partnership working with local people and groups, across a number of policy areas and their outcomes.

The Council's vision for community safety is, *Local people living and working in a safe, fear-free and tolerant community.*

In seeking to deliver our vision, we need to ensure for local people that this results in:

- less crime, and local people who fear crime less and feel reassured about their safety;
- fewer problems caused by anti-social behaviour; and
- victims of crime and vulnerable people able to access the support they need

This report provides an overall analysis of performance between 1 April 2004 and 31 March 2005 for this policy area and is a key document in our performance management framework, to ensure that the services we provide are continuously monitored and improved. It looks at:

- what has been achieved;
- the improvements we've made;
- the areas where we need to improve
- the impact we have made on local people; and
- key actions for 2005/06

The report also includes tables that detail our end-of-year actual performance against:

- key indicators
- non-key indicators
- comparisons with other authorities

Further information on any of the issues raised within this report can be obtained from Kate Israel, Head of Service, Community Based Services.

# Executive Summary

## WHAT HAS BEEN ACHIEVED

Over the past year, we have continued to work towards delivering our vision for 2010 and we are now able to demonstrate real progress in several areas.

- The level of domestic burglary has been reduced by 43%, contributing to an overall reduction in core crime of 15%.
- Criminal damage has been reduced, keeping us on target with our LPSA and helping to reduce the fear of crime.
- Alcohol bans have been put in place around all metro stations within the Borough, and within the centre of *Gateshead* and *Gateshead Quays*.
- A Safer Families 'Domestic Abuse Rapid Response Service' (DARRS) has been established to offer improved support to victims of domestic violence.
- *Gateshead Youth Offending Team* continues to be one of the highest performing in the country.

## HAVE WE IMPROVED?

Levels of crime have continued to reduce year-on-year in *Gateshead*. This has been achieved through our strengthened and effective partnership approach to tackling these issues.

Tackling violent crime is a priority and the link between violent crime and alcohol abuse is clear. A number of initiatives to tackle alcohol misuse are underway.

Overall performance is good with the majority of key indicators either improving and/or achieving target.

Ref.	Indicator	Trend	Target Met
BV 126	Domestic burglaries per 1000 households	↑	✓
BV 127	Violent crimes per 1,000 population: (c) Violent offences committed in connection with licensed premises	↑	✓
BV 128	Vehicle crimes per 1000 population	↑	✓
C12	Reduce Cases of re-offending	↑	✓
BV 127	Violent crimes per 1,000 population: (a) Violent offences committed by a stranger	↓	X
	(b) Violent offences committed in a public place	↓	X
	(d) Violent offences committed under the influence*	↓	X

\* Performance deteriorated by 0.01%

### WHAT DIFFERENCE HAVE WE MADE TO LOCAL PEOPLE?

In 2004/05, there were fewer victims of crime and disorder and there was an increased visible and accessible official presence. There was an improved response to anti-social behaviour through the 'It's your call' helpline, and Acceptable Behaviour Agreements were successfully used to deter anti-social behaviour. Action was taken to reduce the impact of alcohol misuse through the use of alcohol bans, and more people accessed drug treatment services.

### WHAT WILL HAPPEN NEXT?

We have a new Community Safety and Drugs Strategy, effective from 1st April 2005. Our main focus in the forthcoming year will be to implement the six priority areas of the strategy, including associated action plans, policies, and strategies.

The six priority areas identified are:

- Increase public reassurance and engagement
- Continue to reduce core crime, including working with prolific and priority offenders
- Lower levels of youth offending
- Tackling anti-social behaviour
- Drug and alcohol misuse
- Supporting victims of crime including hate crime and domestic violence

We will also implement the service improvements identified in the recent Best Value Review of Community Safety, and the Community Support Service Plan.

As a pilot authority for the Local Area Agreement, procedures are currently being established which will enable the Community Safety Partnership to achieve the targets identified within the 'Safer and Stronger' theme within the agreement.

# The Annual Assessment

This report is aimed at reviewing and analysing our overall performance across our outcomes for the Community Safety policy area for 2004/05.

This performance assessment has been arrived at by examining information from a number of sources, which include the actual year-end performance data against their targets, comparisons with other authorities, and from external challenges and judgements that the authority have received over the previous year.

Overall performance is good with the majority of indicators either improving and/or achieving target. Key improvements include:

- a continued reduction in the number of domestic burglaries (BV 126) and the number of vehicle crimes (BV 128)
- a reduction in cases of re-offending by young people above the target level (C12)
- an increase in the number of domestic violence refuge places (BV176)

Crime has reduced year-on-year in Gateshead and the Borough is performing well in comparison to other parts of the country. There have been significant reductions in vehicle crime, burglaries, and criminal damage, and although we saw an initial increase in the incidents of violent crime, this figure is now starting to fall.

However, there are still some issues of concern. Although crime has fallen, this has not been matched by a fall in the fear of crime. There is particular concern about low-level crime, anti-social behaviour, and general disorder, and this has a disproportionate impact on people's perception of their area and on their fear of crime. Crime is not spread evenly across the Borough. Some parts of Gateshead experience crime levels well above the Borough-average and we need to work to reduce this difference. We also need to improve our service to vulnerable people and victims of crime.

The Crime, Disorder and Drug Misuse Audit 2001-2004 was produced in early 2005. From the information gathered, a clear picture emerged of the key issues in Gateshead, which the Community Safety Partnership considered should be priority areas to tackle in the next three years.

Using the information from the Audit, and taking into account the results of an extensive community consultation exercise, the Community Safety and Drugs Strategy 2005-2008 - 'Safer and Stronger Gateshead' - was produced, effective from 1st April 2005.

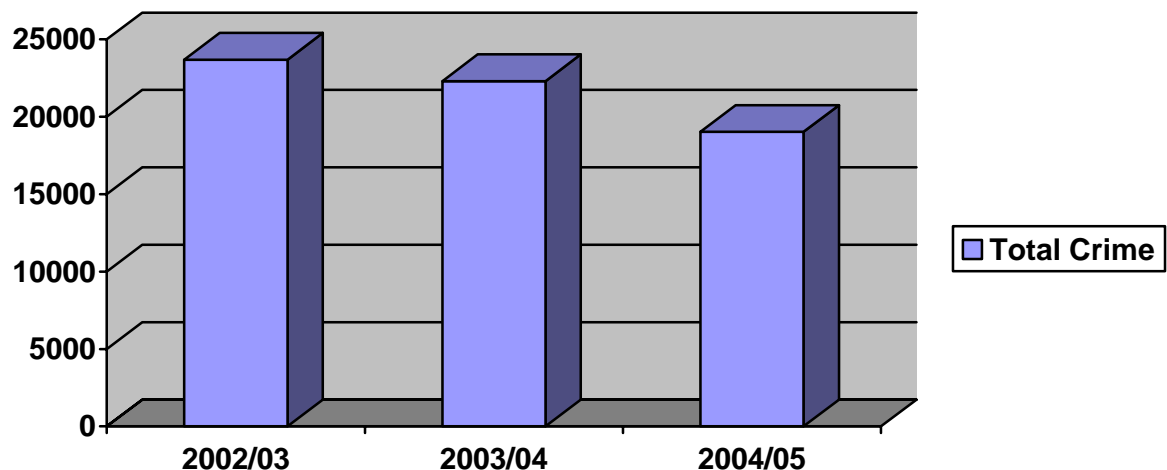
The six priority areas identified are:

- Increase public reassurance and engagement
- Continue to reduce core crime, including working with prolific and priority offenders
- Lower levels of youth offending
- Tackling anti social behaviour
- Drug and alcohol misuse
- Supporting victims of crime including hate crime and domestic violence

*Outcome: Less crime and local people who fear crime less and feel reassured about their safety*

#### Reduced levels of crime

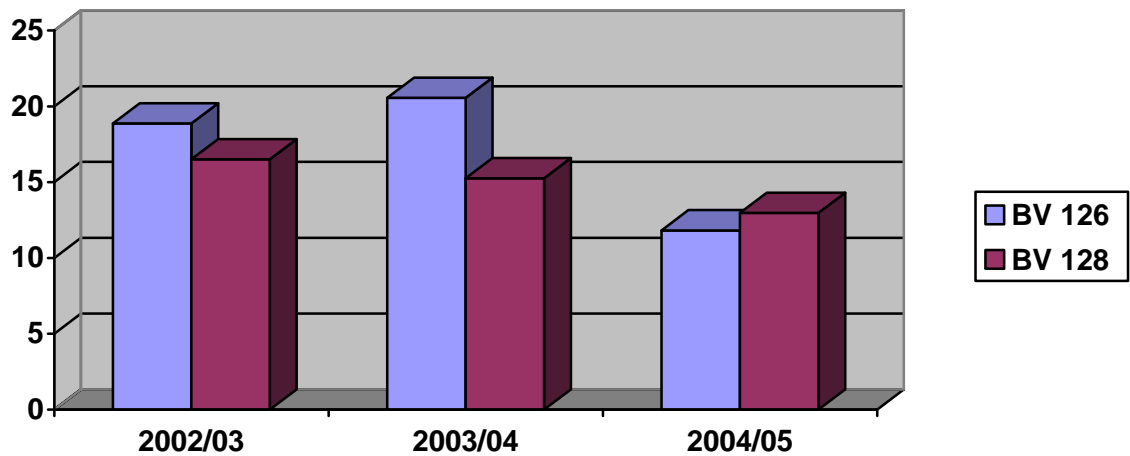
1. Total crime figures for Gateshead for the last three years show a year-on-year decrease. (Source - Gateshead Strategic Partnership)



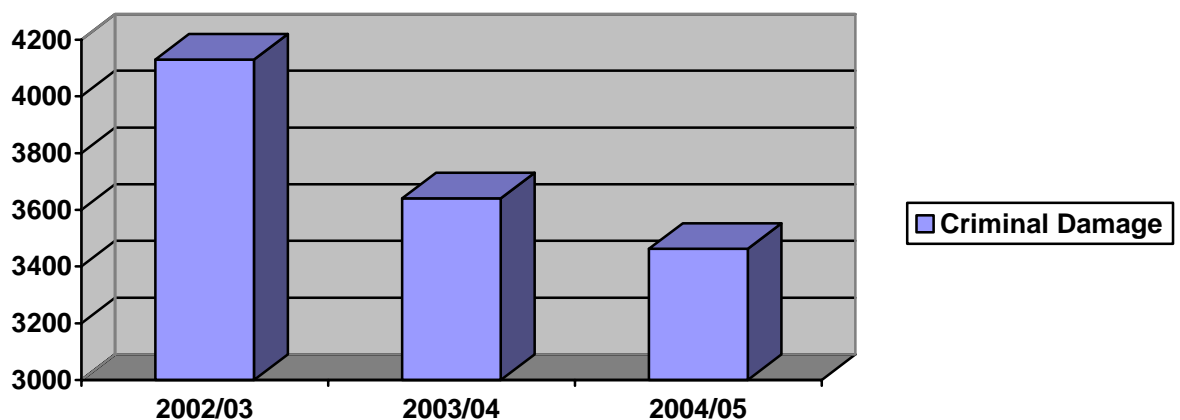
2. In 2004/05, total crime was reduced by 14.7%. This was achieved through more effective deployment of resources and targeting offenders by use of the National Intelligence Model. Reductions in crime have been achieved through a multi-agency partnership approach. As well as targeted police initiatives, the work of the wider policing family, including Police Community Support Officers, Neighbourhood Wardens, problem solving, changes to neighbourhood

policing, and the impact of the Priority and Prolific Offender Project, which targets volume crime, have all had an impact.

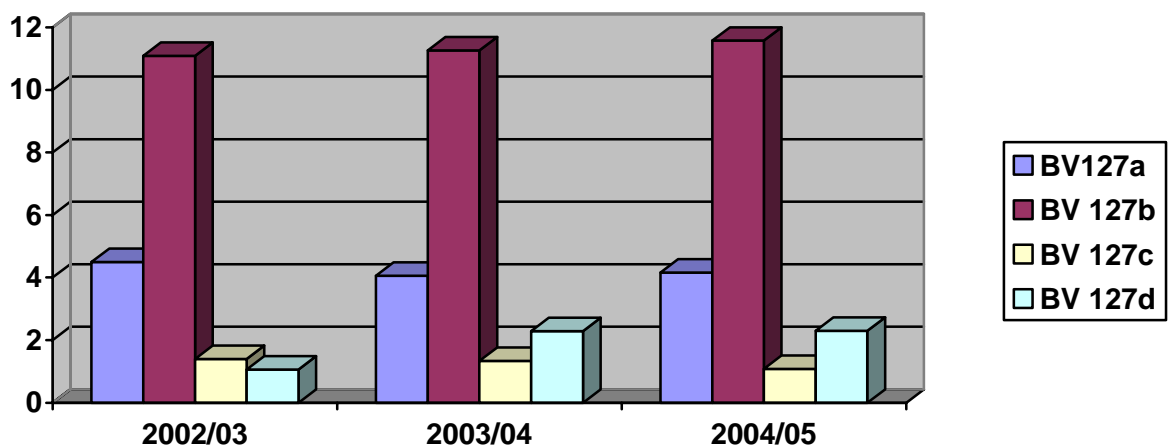
3. There has been a particularly significant decrease in domestic burglaries. The 43% reduction equates to 740 fewer burglaries reported last year. Victim Support has reported a significant reduction in demands on their service due to this and other reductions in core crime.
4. The figure below shows the how the numbers of domestic burglaries (per 1,000 households, BV126) and vehicle crimes (per 1,000 population, BV128) have reduced. (Source Northumbria Police, Corporate Development Department)



5. Criminal damage has been reduced by 5%; this is in line with the LPSA stretch target. Incidents of criminal damage recorded annually by the police have shown a year on year decrease, as can be seen from the figure below. (Source: Northumbria Police, Gateshead Area Command)



6. Levels of violent crime remained steady over the last year, but there has been a recent national upward trend in some offences (see figure below).
7. Tackling violent crime is a priority for the Community Safety Partnership and the Police. There is an established link between violent crime and alcohol abuse. Action to meet the challenge of violent crime linked to alcohol in town centres and areas with a large number of pubs and clubs, has included deployment of staff using the National Intelligence Model in areas where potential for violent crime is highest. Alcohol bans were introduced on the Tyne and Wear Metro and piloted in Gateshead Town Centre.
8. The graph below shows violent crime per 1,000 population, broken down by: committed by a stranger (BV127a), in a public place (BV127b), associated with licensed premises (BV127c), and under the influence (BV127d). (Source: Northumbria Police, Corporate Development Department)



9. Many crimes in Gateshead are committed by a small number of offenders. The Prolific and Priority Offender Project has been successfully implemented to specifically target re-offending by this small number of offenders. The project currently works intensively with 45 identified offenders who have committed a minimum of six offences within a year, and has achieved significant reductions in their re-offending rates. Offenders who have been on the scheme for one year show an average reduction in re-offending of 45.4%. This figure increases to 73.5% for those who have been on the scheme for two or more years.

10. Within the Youth Offending Team (YOT), an additional 20 high-risk young offenders are targeted through the 'Prevent and Deter' strand of the strategy.

#### Reduced fear of crime, and increased public confidence and reassurance

11. In our last residents' survey, local people told us that they are generally satisfied with Gateshead as a place to live, but the single most important factor in making people feel safer was a visible, official, uniformed presence in their neighbourhoods. The top policing priority for the Gateshead area for 2005/06 (from the Northumbria Police Authority 'Your Views Count' questionnaire 2004) was 'to patrol the streets'. We have, therefore, focused services at a neighbourhood level to enable us to be more visible and responsive to our communities' needs.
12. Initiatives introduced to increase reassurance include the expansion of Police Community Beat Managers, and Police Community Support Officers. Our Neighbourhood Warden service has been enhanced following the attraction of £1.1million of external funding. There is now a warden presence in each of the five neighbourhood management areas.
13. Five area-based problem-solving groups have been set up with the police to find practical, sustainable, solutions to local issues and concerns. Currently, the groups are dealing with 29 issues across the Borough. Some examples of the successful resolution of local problems during the year include multi-agency work to target youth disorder in Winlaton, addressing traffic issues at Kingsmeadow School, work to alleviate problems around drug taking, begging and shoplifting in the Town Centre, and work with the Arson Task Force in Sunderland Road to reduce levels of arson.

#### Drug and alcohol misuse

14. The Gateshead Community Safety and Drugs Audit looked at a range of drug-related issues in Gateshead, including numbers of known drug users, links between drug misuse and crime, and the availability of drugs.
15. The Adult Treatment Plan again received a green light assessment from Government Office North East and the National Treatment Agency. The number of people accessing drug treatment in Gateshead rose to 1,009 in 2004/05.

16. More young offenders were helped with substance misuse problems. The YOT met the new Youth Justice Board target for substance misuse for the first time in the final quarter of 2004. Of the 505 young people screened, 177 were identified as having a problem. Those with identified needs (137), received an appropriate assessment within five days, and the 92 young people who needed to access intervention or treatment services, were all referred within ten days.
17. There was a continued reduction of the number of young people who smoke, or abuse drugs or alcohol, through work on all fronts including preventative activity through education programmes and providing effective support for those who do. For example, in September 2004, pupils at Tyne View Primary School won the North East regional heat of the FRANK Stakeholder Awards. The National FRANK initiative, supported locally by Gateshead Drugs Action Team (DAT), allows children to develop their understanding of the topic through open discussions, written work, and role-play.
18. Three comprehensive external training courses in adolescent substance misuse were delivered within a six-month period for a wide range of service providers working with children and young people in Gateshead.
19. 98% of schools have the Healthy Schools Award, one of the criteria for which is education about drug misuse. About 20 of these are at Level 3, with the numbers updated regularly as schools achieve the standard.
20. The issue of 'hidden harm', identified by the report of an inquiry by the Advisory Council on the Misuse of Drugs, has enabled the DAT Young People's Group to identify that there are possibly 700 - 1,100 children in Gateshead at risk through their parent's drug taking. We will, therefore, be developing services to support children and young people affected by drug misuse.
21. For the second year running, the Communities and Availabilities Group funded numerous community development projects within the Borough. A range of support programmes and diversionary activities were specifically implemented within high crime areas to assist young people and their families, parents, and carers.

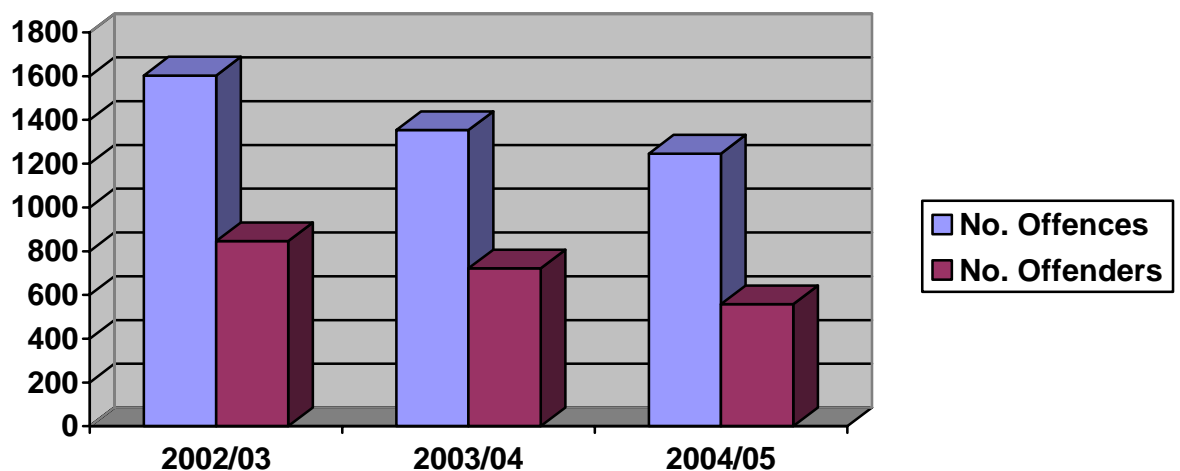
22. An Alcohol Needs Assessment was commissioned with the aim of assessing the extent of need for alcohol services in Gateshead, and to examine the adequacy of existing provision. A final report, including recommendations, has now been produced. These recommendations will inform the development of an Alcohol Harm Reduction Strategy for the Borough.

23. Alcohol bans were put in place around all metro stations within the Borough. Pilot bans were put in place around the centre of Gateshead and Gateshead Quays in December 2004. The impact of the bans will be evaluated after six months of operation in summer 2005.

#### Lower levels of offending by young people

24. The Gateshead Youth Offending Team (YOT) has been shown to provide a high quality service by the most recent performance figures that measure standards of work as well as effectiveness. League tables produced by the Youth Justice Board in January 2005, placed the team joint third out of 155 teams nationally. The performance indicators support the effectiveness of the work of the team, as shown below.

25. Youth crime in Gateshead continues to fall. Over the last three years, there has been a reduction of 34% in the number of young offenders, and a 22% reduction in the number of offences. Figures for the first six months of 2004/05 show a 13% reduction in offences by young people when compared the same period in 2003/04 (Source: Youth Offending Team).



26. We have reduced the number of young people who re-offend. The level has been reduced by 8.72% (57.6% had re-offended within 24 months, compared to 63.1% in the previous year) exceeding the target (5%) for reducing re-offending. This has been achieved through strengthening the preventative and early intervention work in the YOT, targeting young people at risk of offending or who receive a final warning from the police.
27. Although re-offending rates have fallen, overall, most of this reduction has occurred with children and young people who have received reprimands and final warnings. Re-offending rates for young offenders in the court system remain high. There continues to be the need to target resources on offenders who present the highest levels of risk. At present, the evidence suggests that there is insufficient distinction made between higher and lower risk cases in terms of assessment procedures and intervention programmes.
28. Within the Courts and Community and Restorative Justice and Partnerships teams, work has started to reduce the resources going into low-risk cases so as to free up resources for higher-risk cases. A review of the Intensive Supervision and Surveillance Programme is also underway.
29. We are aiming to increase the numbers of young offenders in full time education, training, or work, by reviewing the range of training provisions available to young people who offend. However, for the past nine months, progress in meeting the 90% education, training, and employment target has begun to stall at around 80%. Work has started within the wider partnership to review and improve the range and quality of training provision, and to consider how to establish stronger links into the 14 - 19 year old agenda. Discussions have started with Education Welfare to create an additional joint post through the re-alignment of existing resources to provide more targeted support.
30. The YOT makes good use of Asset-based assessment data to help to target resources. Whilst some work has been done to link Asset data to re-offending, there has been insufficient analysis of this data to identify the critical areas of concern. The team continues to be data-rich, but relatively poor on analysis.

31. Where young people do become involved in crime, the YOT try to intervene at an early stage when problems may be more manageable. More young people on final warnings are being supported than ever before (177), representing 84% of all final warning issued by the police.
32. The Amber Programme of Youth Inclusion and Support Panels were successfully introduced across all of the five neighbourhood management areas to work with those children and young people most at risk of becoming involved in crime or anti-social behaviour. The programme works with a range of local partners, including schools and housing, to try to ensure that high-risk young people and their families receive the help and support they need.
33. The team continues to develop new services for children and young people and their families. In September 2004, Gateshead became a national pilot site to develop the use of Family Group Conferences as part of the Amber Programme. The pilot is on course to meet its target to work with 40 families a year. In 2005, additional funding was obtained from the Anti Social Behaviour Unit to support work with parents.

***Outcome: Fewer problems caused by anti-social behaviour***

34. We agreed an Anti-Social Behaviour Strategy in October 2004, which identifies the activities that need to be undertaken in order to reduce levels of actual, and perceived, anti-social behaviour in Gateshead. This strategy will be supported by a robust action plan, which is being developed by our Anti-Social Behaviour Co-ordinator.
35. Gateshead is one of fifty 'Together Action Areas'. These 'action areas' are a Home Office initiative to tackle anti-social behaviour and ensure that the full range of enforcement tools are used to bring people to justice. In January 2005, the "It's your call" helpline was launched, providing a single point of contact for complaints about anti-social behaviour which, by the end of the year, had received 141 calls.
36. Work has begun to develop a corporate anti-social behaviour database which will give us better information about the extent and nature of anti-social behaviour in the Borough, enabling us to provide a more co-ordinated response across all service areas.

37. The YOT is working to prevent anti-social behaviour by intervening at an early stage with young people who are showing signs of social exclusion, through the Amber Programme, the Respect Birtley and Futures Plus youth inclusion programmes.
38. Evaluation of the Blizzard Project, which is a team of Neighbourhood Relations Officers and Police Officers who work intensively in local housing estates within Neighbourhood Management Area South to reduce crime and anti-social behaviour, has been evaluated by Northumbria University. They are now in the process of identifying the good practice principles that the project has developed.
39. With the Gateshead Housing Company and Northumbria Police, the Council has negotiated 37 Acceptable Behaviour Agreements as at 31 March 2005. In the preceding six months, we obtained five Anti-Social Behaviour Orders.
40. We successfully bid for funds to support the parents of young people involved in anti-social behaviour. Over the next two years, we will receive £50,000 from the Home Office, which will be used to develop the Sungate Family Support Project. This project will strengthen current links between Barnado's and the YOT, and will work intensively with the families of young people who perpetrate anti-social behaviour while at the same time looking to reduce levels of youth anti-social behaviour in terms of numbers and frequency.

*Outcome: Victims of crime and vulnerable people able to access the support they need*

41. The Community Safety and Drugs Strategy 2005-2008 recognises that support to all victims of crime, including racist and homophobic crimes and victims of anti-social behaviour, needs to be improved. We have, therefore, consulted with users, vulnerable groups, and hard to reach groups, in order to get their views about what more can be done to support them. We also work closely with Gateshead Victim Support and the Witness Service.
42. A 24-hour crisis intervention service for families who are victims of domestic violence is now available. This has been possible through the Domestic Violence Forum securing £1.5 million of funding from the

Northern Rock Foundation in July 2004 to set up a ground-breaking Domestic Abuse Rapid Response Service (DARRS) within Gateshead. This service of 16 staff offers a response service to women and children at the point of crisis with opportunities for ongoing support, whilst at the same time concentrating 'change' interventions upon perpetrators.

43. We provided more domestic violence refuge places, with 19 places now supported by Gateshead Council compared with 10 in the previous year. This means that we are in the top quartile nationally for performance.

44. The Racist Incident Reporting Scheme was re-launched in May 2004 in order to encourage more victims to have confidence to report racist crimes and incidents. 149 incidents were reported in the year, compared with 96 in the previous year.

## Have we made a difference?

45. Last year we wanted to concentrate on four main areas for improvement around:

- Reduced fear of crime;
- Reduced core crime;
- Reduced instances of anti-social behaviour; and
- Improved responses for vulnerable groups and victims of crime

46. This section outlines the improvements we have made in these areas and where further improvements are still required.

### Reduced fear of crime

47. The year-on-year reduction in core crime, which has been achieved by our strengthened and effective partnership approach, has increased public reassurance and confidence within local communities in Gateshead.

48. The anti-social behaviour reporting line has helped us to deal quickly with anti-social behaviour and increase reassurance and confidence in communities.

49. We completed the Audit of Crime, Disorder and Drug Misuse across the Borough, which identified specific areas of concern to the public which will be addressed in the Community Safety And Drugs Strategy.

50. We improved consultation and engagement mechanisms with local communities and the way we communicate our activities to residents.

51. Through dedicated teams of policing, Community Support Officers, and more Neighbourhood Wardens, we provided a more visible and accessible official presence within our local communities, which local people have told us is what they want.

### Reduced core crime and in particular levels of burglary, violent crime, and drug/alcohol-related crime

52. Burglary levels fell by 43% last year, meaning that there were 741 fewer victims, which surveys have told us is the most feared crime. Car crime levels fell by 15% and criminal damage by 5%.

53. Issues relating to drug and alcohol-related crime have been given higher focus and priority resulting in more people accessing drug treatment services. Last year 1,009 problem drug users, as part of the Young People's Substance Misuse and Adult Treatment Plans, used the treatment services compared to 632 in 2003/04.
54. Substance misusers can now access services more easily via the OASIS Information Centre within Gateshead. Funded by the Adult Treatment Pooled Budget.
55. Service users and carers have become more involved in the design and review of the local treatment system. The service user group 'FOCUS now' represents service users at the DAT Joint Commissioning Group and other DAT groups.
56. All young offenders were routinely screened for mental health or substance misuse problems and, where, required were referred for treatment and help.

#### Reduced levels of anti social behaviour

57. The Anti-Social Behaviour Strategy was developed and agreed in October 2004.
58. The 37 ABA's signed in the last year proved a successful deterrent in changing behaviour.
59. The Gateshead Youth Offending Team achieved national recognition and has been consistently at, or near, the top of national Youth Justice Board league tables.
60. Through an active partnership between the YOT and the Children's Fund, a Borough-wide prevention programme (the Amber Programme) was established with the capacity to work with up to 200 children and young people a year to prevent their involvement in crime or anti-social behaviour. 61 children and young people were helped last year.

#### Improved responses for vulnerable groups and victims of crime

61. The YOT helps young people make amends for their behaviour. In the last year, 345 young people either made direct reparation to their victim, offered an apology, or were involved in a community reparation project.

62. The re-launch of the racist incident reporting scheme has started to encourage victims to have greater confidence to report racist crimes and incidents.

63. The service provided to victims of domestic violence in Gateshead has been strengthened through the generosity of the Northern Rock Foundation whose contribution of £1.9 million over three years has enabled the introduction of a Domestic Abuse Rapid Response Service (DARRS). DARRS also provides separate services for women survivors, children's play therapy, and perpetrators programmes.

#### Value for money/efficiency impacts

64. The recent Best Value Review of Community Safety showed that over 80% of community safety is externally funded, which makes our service extremely cost-effective. We have been successful in drawing down and making effective use of a range of external funding opportunities supplemented by contributions from statutory partners such as Northumbria Police. The external funding regimes all impose stringent, rigorous, performance management and monitoring criteria to ensure that projects meet their agreed targets and represent value for money.

65. The DAT returns an annual Adult Treatment Plan to the National Treatment Agency. Gateshead's Plan continues to be recognised as 'green' status by the regional NTA's Performance Management Group.

66. The Young People's Substance Misuse Plan, Communities Plan, and Reducing Supply Plan, are performance managed by Government Office North East through a Local Performance Agreement which is monitored quarterly.

67. The high performance of the YOT is based on the effective use of a pooled budget and extensive use of external funding opportunities. All statutory partners contribute to the pooled budget and second staff into the team. The team has been successful in drawing down a range of external funds including Youth Justice Board funding, the Neighbourhood Renewal Fund, the Children's Fund, Safer and Stronger Communities, the Police Authority, and Positive Activities for Young People.

### Consultation

68. An extensive consultation exercise was undertaken as part of the Audit of Crime, Disorder and Drug Misuse carried out in 2004. This included consultation with our Citizens' Panel, service users, young people, elected members, older people, and the Learning Disabilities Partnership. The comments and views expressed were taken into account as part of the development of the Community Safety and Drugs Strategy.
69. Service user comments are obtained through a variety of means including the anti-social behaviour help line, satisfaction surveys conducted by the Neighbourhood Wardens Service, community engagement, and residents survey.
70. Where young offenders received a referral order during 2004/05, 86% of victims were successfully contacted and over 60% had their views represented to the Youth Offender Panel dealing with the young person. 100% of victims who responded expressed satisfaction with the service they had received from the YOT. 15 victims took the opportunity to attend the panel and meet the young offender face to face.

## What do we want to do next?

71. There are a number of challenges affecting the Community Safety policy area and the key ones are listed below. Priorities and actions relating to the YOT for 2005/06 are included in the Children and Young People's Service Improvement Report.

### Safer, Stronger Gateshead

72. Implement the six priority areas of the 2005-2008 Community Safety and Drugs Strategy.

73. This also includes raising awareness of the initiatives through targeted publicity campaigns and increasing the visibility of new officers will help to alleviate the fear of crime. Challenges and actions within the Strategy also include developing Communication and Engagement Strategies.

74. Other associated priorities for action include:

- to develop a Domestic Violence Policy
- to implement and review multi-agency Domestic Violence Strategy
- to develop a CCTV Strategy for the Borough
- to continue to implement the Priority and Other Prolific Offenders Strategy to reduce crime with the police, Probation Service, and the YOT
- to implement DAT Adult Treatment Plan, Young Peoples Substance Misuse Plan, and Communities and Availabilities Plan
- to develop a sustainable financial plan for externally funded initiatives including Neighbourhood Wardens and DARRS

### Anti-Social Behaviour

75. We will implement the Anti-Social Behaviour Strategy action plan.

76. Over the next 12 months, we aim to set up an Anti-Social Behaviour Forum to build upon multi-agency issues and address themes such as Graded Response and environmental anti-social behaviour.

77. Along with our partners, including the Youth Offending Team, will continue to develop and modify the Graded Response to Anti-Social Behaviour that emphasises early intervention and focuses on preventative measures in tackling anti-social behaviour particularly

around young people. The approach is to tackle the causes as opposed to the effects of anti-social behaviour. The aim is to reduce the numbers of Acceptable Behaviour Agreements and ASBOs through early intervention, while ensuring that persistent and serious offenders are tackled via a range of enforcement tools.

78. We will carry out a full review of the effectiveness of the Youth Inclusion Support Panel Amber Project.

79. We will complete the restructuring of the youth inclusion programme so as to target 100 young people aged 13-17 who are most at risk of becoming involved in crime or anti-social behaviour.

80. We will work with 35 parents or carers referred via the Anti Social Behaviour Panel to help reduce anti-social behaviour by young people.

#### LPSA

81. The Local Public Service Agreement was signed off in March 2005. We will achieve our agreed LPSA stretch targets in relation to criminal damage through problem solving.

#### Alcohol Harm reduction

82. We will work with our partners to develop an Alcohol Harm Reduction Strategy within the next twelve months. This work will be strengthened by work to be undertaken by our partner agencies and the new powers under the Licensing Act, such as working with licensees to promote responsible drinking. This should also impact positively on the levels of violent crime. Northumbria Police will undertake a rigorous summer campaign to tackle crime associated with alcohol abuse. The operation will be centred on 'Drunkenness, Violence and Disorder'.

#### Best Value Review

83. We will complete the Best Value Review of Community Safety and implement service improvements including action to:

- develop a Safe and Stronger Crime Model
- incorporate Action on Alcohol into the work of the Drug Action Team
- develop an integrated performance management framework for community safety and drugs

- deal with youth disorder, focusing on young people aged 8-13 years
- increase awareness of services and support available to victims of crime, in particular hate crime

#### Neighbourhood Management

84. Implement the key actions under the Community Safety theme in each of the five Area Action Plans.

#### Local Area Agreement

85. We are a pilot authority for the Local Area Agreement. Procedures are being established which will enable the Community Safety Partnership to achieve the targets identified within the Safer and Stronger theme within the agreement, which have been taken from the Community Safety and Drugs Strategy.

#### External Pressures

86. Community safety and drugs misuse have been key priorities for the Government in recent years. The Home Office's Strategic Plan 2004-2008, 'Confident Communities in a Secure Britain' identifies a series of key measures designed to assist in a reduction in crime by 2008.

87. There were a number of plans and initiatives published in the last 12 months. These are detailed below:

- Home Office 'Together' campaign provides Government support to our local approach to tackling anti-social behaviour.
- National Policing Plan 2005-2008 sets out the Government's priorities for the police for the next 3 years. The plan is a key element in raising police performance in reducing crime and fear of crime.
- Northumbria Police Authority Strategic Plan 2005/06 sets out expected performance levels and therefore crime targets for the Partnership and the Council.
- The White Paper 'Building Communities, Beating Crime' clearly states the Government's vision to help build safety, security and stability within all our communities. Proposals include:
  - a review of the partnership provisions in the [Crime and Disorder Act 1998](#), with a view to making partnerships more effective and truly accountable and with local authorities playing an increased role both as partners and scrutinisers;
  - new powers for Police Community Support Officers (PCSOs);

- national standards for the recruitment, pay, and training of PCSOs, and developing a minimum set of powers which all PCSOs should have;
- Local Policing Plans to incorporate priorities identified by CDRPs;
- a dedicated policing team for each neighbourhood;
- a 10-point customer service charter for each police force;
- electable police authorities; and
- a new national 3-digit non-emergency telephone number.
- The Clean Neighbourhoods and Environment Act 2005 contains a number of extensions to existing powers and tools to tackle anti-social behaviour and environmental crime.
- The Domestic Violence, Crime and Victims Act 2004 will be implemented from April 2005. The purpose of the Act will be to introduce more protection for victims of domestic violence.
- The national Prolific and Other Priority Offender Strategy has been developed to tackle those offenders who are identified locally as being the most prolific. A joined-up, multi-agency, approach is fundamental to this, with police, probation and health services working together to reduce crime and re-offending.
- The Children's Act 2004 provides the legislative framework for more effective co-operative working between agencies dealing with young people and children.

### Future Legislation

In the Queen's speech proposals were included for a Violent Crime Bill  
This bill:

- gives powers to Councils to require the use of safe beer glasses and drinks bottles in all pubs and clubs in high areas of drink-related violence - possible as a condition of license;
- gives powers to Councils to ban drinking on buses and other public transport;
- introduces 24-hour bans on pubs and clubs persistently selling alcohol to underage drinkers;
- obliges pubs and clubs which generate most disorder to make a contribution towards additional costs of dealing with that disorder; and
- also includes measures outlawing imitation and air guns and gives head teachers new powers to search pupils for knives.