

# Safer Gateshead

Safer People, Safer Communities

## Safer Gateshead Partnership Plan

April 2011

## Contents

|  | Page |
|--|------|
| Introduction .....                       | 2    |
| Safer Gateshead – The Story so Far ..... | 3    |
| - National Context                       |      |
| - Gateshead's Vision                     |      |
| - Safer Gateshead                        |      |
| Strategic Assessment .....               | 5    |
| - Crime .....                            | 5    |
| - Incidents .....                        | 7    |
| Our Achievements to Date .....           | 8    |
| Partnership Priorities .....             | 12   |
| Measuring Performance .....              | 16   |

## Introduction

I am pleased to introduce the annual Safer Gateshead Partnership Plan for 2011/12. This Plan outlines the progress we have made in the past 12 months and details the areas we aim to focus on in the coming year.

Safer Gateshead is a strong, established and progressive partnership. Our vision remains *“to make Gateshead a safer place in which to live, work and visit.”*

Since the 2008 Safer Gateshead Partnership Plan was published crime and disorder in the borough has reduced by 41.5%. Despite the global economic downturn, this success has continued. Between April 2010 and March 2011 we achieved a reduction of 9.4% in recorded crime compared to the previous year, equating to 1112 fewer offences. To help us achieve this reduction in crime over the last 12 months, Safer Gateshead has successfully delivered numerous partnership initiatives and some of these successes are outlined within this Plan.

The next 12 months will be some of the most challenging. The Government’s Spending Review and subsequent public service cuts will mean that in future we will have fewer resources to tackle the issues that matter to our local communities. This further enhances our need to continue to work together in partnership.

I am confident that this Partnership Plan will help us to achieve our vision and ensure that Gateshead remains a safe place.

*Councillor Peter Mole MBE  
Chair of the Safer Stronger Communities and Culture Partnership*



## Safer Gateshead – The Story so Far

### National Context

Since the election of the Government in 2010, there has been a fundamental shift in the way in which public sector services are expected to deliver services. The overarching principles of the “Big Society” are:

- to give communities more powers,
- to encourage people to take an active role,
- the transfer of power from Central to Local Government and
- the greater involvement of communities in the running of local services provide both opportunities and challenges.

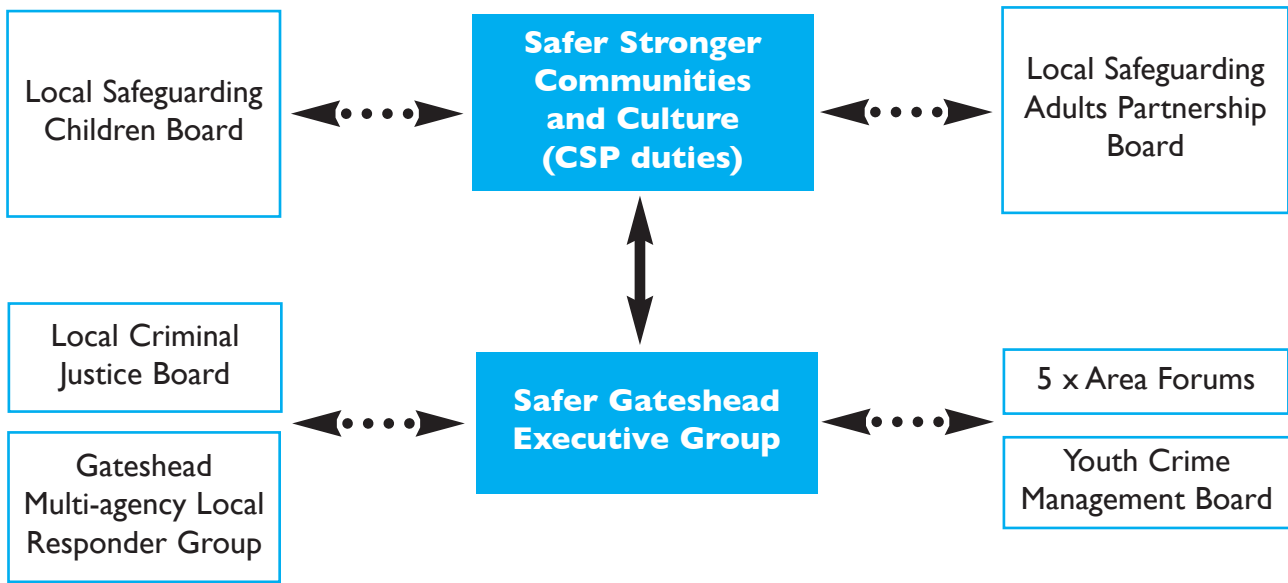
Within Gateshead we are proud that we already have a history of working closely with our communities within the Community Safety Agenda. We have forged close links with our partners in the community and voluntary sectors and will continue to strengthen those relationships.

### Gateshead’s Vision

Partners within Gateshead have set out a far-sighted ambition for the borough which is articulated through Vision 2030, Gateshead’s Sustainable Community Strategy. This vision recognises the deep rooted challenges which still remain in Gateshead but demonstrates our high aspirations for local people and our commitment that Gateshead is recognised as a safe and secure place for our residents, communities and businesses.

Vision 2030 identified six Big Ideas for the transformation of Gateshead; City of Gateshead, Gateshead Goes Global, Creative Gateshead, Sustainable Gateshead, Active and Healthy Gateshead and Gateshead Volunteers. Safer Gateshead feeds into all the six Big Ideas, in particular the City of Gateshead which aims to, among other things, make Gateshead a safe place to live and visit. As part of the pathway to achieving this Big Idea, the vision is to reduce crime by a third and we are well on the way to achieving this vision.

## Gateshead Strategic Partnership



The Safer Stronger Communities and Culture Partnership currently incorporates the statutory community safety partnership duties. The Partnership is, among other things, responsible for setting the direction for community safety in Gateshead and ensures that we meet our statutory obligations.

The Safer Gateshead Executive Group is responsible for the co-ordination, development and implementation of our strategic priorities.

### Safer Gateshead

The partners within Safer Gateshead have a statutory requirement to address crime and disorder, anti-social behaviour, behaviour adversely affecting the local environment substance misuse and to reduce re-offending. We have six responsible authorities who must work together to achieve our statutory duties and strategic priorities:

- Gateshead Council
- Gateshead Primary Care Trust
- National Probation Service, Northumbria Probation Service
- Northumbria Police
- Northumbria Police Authority
- Tyne & Wear Fire and Rescue Service

Safer Gateshead is encompassed within a clearly defined organisational structure to maximise strategic and operational effectiveness.



## Strategic Assessment

The fourth Safer Gateshead Strategic Assessment was completed in December 2010. It forms part of an intelligence-led approach to community safety, which enables a more focused, resource-effective and partnership-orientated delivery of options to help:

- better understand the patterns and trends relating to crime, disorder and substance misuse;
- set clear and robust strategic priorities for the Partnership;
- develop interventions and activities that are driven by reliable intelligence-led evidence; and
- deploy resources more effectively to accurately meet the needs of the local Gateshead community.

The analysis of community safety issues in Gateshead has been structured using a problem-orientated approach. It considers aspects of offending behaviour, victimisation and place-based considerations to provide a cross-cutting assessment of the strategic issues in Gateshead.

The Strategic Assessment covered the 12 month period running from October 2009 to September 2010 and has used data obtained from both statutory and non-statutory partner agencies including: the Local Authority, Northumbria Probation Service, Northumbria Police, Tyne & Wear Fire and Rescue Service, Tyne and Wear Research Institute, Nexus, Gateshead Magistrates Court and The Gateshead Housing Company.



Key crime, disorder and substance misuse statistics from the Strategic Assessment period include:

### Crime

- We have made great strides in reducing crime in Gateshead. Total crime has fallen by 6.8% in the last 12 months – equating to 810 fewer offences. There have been year-on-year reductions too, with crime falling by 53% since 2002.
- Successful reductions have been achieved in most major crime categories (displayed in table on next page). The greatest volume decreases were achieved in vehicle crime, criminal damage and burglary-related offence types.
- Despite falling by over 15% on last year – the number of vandalism/criminal damage offences recorded in Gateshead still accounts for almost 26% of all recorded crime.

- The number of drug-related offences has increased by almost 15% compared to last year. This can, however, be directly attributable to a rise in proactive intelligence-led drug operations undertaken.
- There is a clear link between substance misuse and crime. The influence of alcohol was present in almost 16% of all recorded crimes in Gateshead. This proportion is even higher for specific crime categories such as violent crime in which alcohol was an influencing factor in over 47% of offences.
- Alcohol-related hospital admissions in Gateshead are significantly higher compared to the rest of the South of Tyne & Wear region.
- During the last 12 months we have seen a decrease of 60% in the number of first time entrants to the Youth Justice System.
- The increased levels of engagement and interventions for those at high risk of re-offending have helped to sustain low numbers of custodial sentences passed out to young people aged between 10 and 17 years old.

| Crime Type                  | Oct 08-Sept 09 | Oct 09-Sept 10 | Difference  | (%) Difference |
|-----------------------------|----------------|----------------|-------------|----------------|
| Violence against the person | 1840           | 1921           | 81          | 4.4            |
| Sexual offences             | 80             | 94             | 14          | 17.5           |
| Robbery                     | 73             | 64             | -9          | -12.3          |
| Domestic burglaries         | 584            | 521            | -63         | -10.8          |
| Burglary non-dwelling       | 888            | 762            | -126        | -14.2          |
| TOMV                        | 342            | 279            | -63         | -18.4          |
| TFMV                        | 1013           | 796            | -217        | -21.4          |
| Theft-related offences      | 2637           | 2740           | 103         | 3.9            |
| Fraud offences              | 355            | 294            | -61         | -17.2          |
| Criminal damage             | 3411           | 2883           | -528        | -15.5          |
| Drugs offences              | 500            | 573            | 73          | 14.6           |
| Other offences              | 200            | 186            | -14         | -7.0           |
| <b>Total</b>                | <b>11923</b>   | <b>11113</b>   | <b>-810</b> | <b>-6.8</b>    |

## Incidents

- Almost 21% of all incidents recorded by Northumbria Police are deemed to be anti-social behaviour-related.
- There has been a 9.1% fall in the number of reported anti-social behaviour incidents within the Gateshead borough; with youth-related anti-social behaviour decreasing by 6.4%.
- The majority of anti-social behaviour issues continue to relate to rowdy and inconsiderate behaviour – accounting for almost 60% of the total number of incidents.
- The decline in vehicle thefts has contributed to the successful reduction in the number of incidents relating to abandoned vehicles.

| Crime Type                              | Oct 08-<br>Sept 09 | Oct 09-<br>Sept 10 | Difference   | (%) Difference |
|---|--------------------|--------------------|--------------|----------------|
| Rowdy/inconsiderate behaviour           | 8708               | 8027               | -681         | -7.8           |
| Nuisance neighbours                     | 2089               | 2076               | -13          | -0.6           |
| Nuisance & inappropriate use of vehicle | 1566               | 1618               | 52           | 3.3            |
| Malicious/nuisance communications       | 918                | 724                | -194         | -21.1          |
| Hoax call to emergency services         | 528                | 296                | -232         | -43.9          |
| Street drinking                         | 208                | 202                | -6           | -2.9           |
| Animal problems                         | 276                | 202                | -74          | -26.8          |
| Environmental damage/littering          | 177                | 148                | -29          | -16.4          |
| Abandoned vehicles                      | 213                | 120                | -93          | -43.7          |
| Noise                                   | 121                | 96                 | -25          | -20.7          |
| Fireworks                               | 65                 | 41                 | -24          | -36.9          |
| Trespass                                | 55                 | 32                 | -23          | -41.8          |
| Begging/vagrancy                        | 21                 | 21                 | 0            |                |
| Prostitution-related activity           | 6                  | 1                  | -5           | -83.3          |
| Substance misuse                        | 14                 | 0                  | -14          | -100.0         |
| <b>Total ASB</b>                        | <b>14722</b>       | <b>13381</b>       | <b>-1341</b> | <b>-9.1</b>    |
| Adult-related ASB                       | 10124              | 9075               | -1049        | -10.4          |
| Youth-related ASB                       | 4598               | 4306               | -292         | -6.4           |
| Alcohol-related ASB                     | 1365               | 1388               | 23           | 1.7            |
| Youth & alcohol-related ASB             | 251                | 292                | 41           | 16.3           |
| Hate-related Incidents                  | 65                 | 45                 | -20          | -30.8          |

## Our Achievements to Date

Since the publication of the 2008 Partnership Plan we have achieved a great deal and helped make a significant difference to the lives of people living and working in Gateshead. Recorded crime across the borough has fallen considerably since 2008, reducing by 41.5%. Below are a few examples of how we delivered against our priorities in 2010/11.

### Improving Public Confidence and Perception

#### Safer Communities Survey

Through the Tyne and Wear Safer Communities Survey, conducted by Northumbria Police on behalf of the Partnership, we were able to identify the key worries and concerns of local residents in relation to community safety-related issues. The latest survey shows that 85% of Gateshead residents feel safe living in their area. The survey results were used by Safer Gateshead to prioritise communication and engagement work throughout the borough.

#### Confident Communities in Gateshead

Between November 2010 and March 2011 Safer Gateshead funded a Development Worker within the Gateshead Older People's Assembly to carry out community development and engagement work with older residents. Project work was targeted within areas where there are higher proportions of older residents, in areas where fear of crime is high and confidence levels are low and in areas where increased community tensions have been identified.



#### No Cold Calling Zones

Trading Standards, working together with residents, Northumbria Police, Safer Communities, Neighbourhood Wardens and the Gateshead Housing Company, launched a pilot No Cold Calling Zone in Birtley's Kateregina Estate in March 2011 in order to combat doorstep crime within the immediate area and raise awareness about issues across the borough. The success of this pilot will be monitored to see if this can be rolled out to other areas.

#### Community Payback

Community Payback in Gateshead continues to embed itself into neighbourhood work and is reactive as well as proactive to concerns from local communities. This work has been undertaken in all areas of Gateshead and will continue to engage and react to concerns from local communities and fully involve the voluntary sector in the Community Payback process.

## Reducing Volume Crime and anti-social behaviour and addressing Community Safety Issues in Priority Wards

### Neighbourhood Pride

During 2010/11 over 60 Neighbourhood Pride schemes have been funded through joint funding streams totalling £145,000, including Safer Gateshead. The initiative improves neighbourhoods by enhancing the local environment, tackling environmental crime and ASB. Neighbourhood Pride is a joint approach to delivering cleaner, safer, greener and stronger communities by involving local people in the delivery of local services and engaging residents in becoming actively involved in the further development and sustainability of Neighbourhood Pride projects. Projects are further enhanced and resources maximised through developing joint approaches including, Community Payback, Local Schools, Junior Wardens, Big Tidy Up Campaign and National Tree Week.



### Safer Neighbourhoods

The revised approach to tackling community safety issues at a neighbourhood level was launched in March 2011. Safer Neighbourhoods is a forward thinking and action focused approach linking the strategic vision of Safer Gateshead with evidence led action plans for the five Safer Neighbourhood

Group areas. Each multi-agency Safer Neighbourhood localised action plan will run in parallel with any emerging issues and will help to proactively target resources into areas of greater vulnerability and need.

### Family Intervention Project

The Family Intervention Project (FIP) in Gateshead has had 50 cases between April 2010 and February 2011. The twin track approach of support and the threat of enforcement continue to pay dividends insofar as during 2010-2011 it was only considered to be appropriate to apply for one ASBO against a person under the age of 18 years old. This is the same with the previous year and part of this is due to the success of the early intervention method through the FIP.

### Diverting Young People

#### Friday/Saturday Night Activities

Safer Gateshead funded activities for young people on Friday and Saturday evenings at various venues throughout the borough as evidence showed that ASB was more prevalent at these times. One example is the Bleach Green project where we have provided drop-in sessions and a range of activities for young people on Friday and Saturday evenings at the Pavilion.

### Reducing Re-offending

In 2010/11 funding was successfully secured from Northumbria Police Authority to launch the Engage Project in Gateshead. This is an innovative project to reduce re-offending among repeat and prolific offenders of low-level and acquisitive crime. The project delivers an intensive programme to cover life, basic, personal development, employment and vocational skills, offering real life work placements and trials, volunteering and employment opportunities.

A key target for 2010/11 was to develop an Integrated Offender Management approach in order to reduce repeat offending. This important piece of work is ongoing and remains a priority for 2011/12.

## Reduce Alcohol-related Harm

### Gateshead Alcohol Harm Reduction Strategy

Throughout 2010/11 we have continued to make good progress to reduce alcohol related harm within the Borough. Key priorities within the Alcohol Harm Reduction Strategy have encouraged partners to develop a more co-ordinated approach.

### Tyne & Wear Fire and Rescue Service

Tyne & Wear Fire and Rescue Service has been working successfully in partnership with Turning Point, an alcohol treatment service. The service is able to refer individuals to Turning Point who have been involved in domestic fires where alcohol is deemed to be a significant contributory factor. Fire Service staff have referred 53 people to Turning Point since 1st April 2010 up to and including 30th January 2011. In addition three Turning Point team members have been trained in the Home Safety Check process and they now carry out checks during their daily work on behalf of the Fire Service.



### Accident & Emergency Data – The Cardiff Model

The Cardiff Model is a nationally-recognised approach designed to improve the sharing of data and information between Accident and Emergency departments and Community Safety Partnerships in relation to incidents of violence.

The Community Safety Team works directly with all levels of Accident and Emergency Staff (ranging from consultants, nurses and reception staff) as well as the dedicated Alcohol Matron. The benefits of being able to target specific problem areas within the Borough to tackle alcohol-related violence will have positive implications for how services can be tailored and delivered in each individual locality.

## Supporting Victims in Gateshead

### Victim Support

Throughout 2010/11 a dedicated victim support worker has worked with Safer Gateshead to support victims of anti-social behaviour and hate crime. One particular incident involved a vulnerable 61 year old wheelchair user who was referred to the Victim Support anti-social behaviour Worker via the Community Safety Team. She was constantly being harassed by unknown youths within the area who targeted her because of her vulnerabilities. Through Victim Support, arrangements were put in place to improve security in her home and provide dedicated one to one support. She continued to receive support and since March 2010, she has slowly rebuilt her life and is now going out again and socialising. She was so impressed with the service from Victim Support she willingly agreed to speak to Tyne Tees Television at the official launch of the ARCH hate crime reporting system.



## ARCH Hate Crime Reporting System

The Gateshead ARCH hate crime reporting system was successfully launched in October 2010. ARCH is a web based system for reporting racist, homophobic, transphobic, religious incidents and disability hate crimes. It allows all agencies to work together, ensuring the victim receives the most suitable support and the most effective action is taken against perpetrators.

## Domestic Abuse

The Domestic Abuse Executive Forum have continued to develop service user involvement and have a strong and robust service user group which meets regularly and works in partnership with a number of support agencies across Gateshead. Safer Gateshead commissioned Sunderland University to carry out a piece of innovative research exploring why so few Lesbian, Gay, Bisexual and Transgendered (LGBT) victims/survivors of domestic violence are referred to Multi-Agency Risk Assessment Conferences; and recommendations about how this might be improved.

## Partnership Priorities 2011/12

Through the Strategic Assessment and consultation the following four priorities have been identified for 2011/12:

- **Continue to address crime and anti-social behaviour to improve confidence**
- **Minimise the impact of alcohol-related harm**
- **Protect and support vulnerable victims and communities in Gateshead**
- **Reduce re-offending**

### Consultation Findings

The priorities were consulted upon during January and February 2011 with members of the Safer Stronger Communities and Culture Partnership, all five Area Forums and Gateshead residents, with support from a range of council services. The consultation process confirmed the priorities that were derived from the Strategic Assessment and highlighted which of these are most important to us.

The top consultation priority as identified by respondents of the consultation was 'Continue to address crime and anti-social behaviour to improve confidence', with over 72% of people favouring this priority. Almost half of respondents listed 'Protect and support vulnerable victims and communities' as their second priority, while 'Minimise the impact of alcohol-related harm' was identified by two in five people as the third priority.



### Delivering the 2011/12 Priorities

The Strategic Assessment and subsequent consultation identified clear rationale for the selection of the four priorities. It is important to understand this rationale in order to ensure delivery against the priorities over the coming year. The Safer Gateshead Executive Group have used this evidence to devise specific goals for each priority during 2011/12.

The responsibility for delivery of each of the four priorities has been allocated to a dedicated sub-group of the Safer Gateshead Executive Group:

- Alcohol Harm Reduction Steering Group
- Safer Neighbourhoods Steering Group
- Strategic Reducing Re-offending Group
- Supporting Vulnerable Victims and Communities Steering Group

## Continue to Address Crime and Anti-social Behaviour to Improve Confidence

### Strategic Assessment Findings:

- We know that crime and ASB has continued to fall year-on-year – yet fear and perception of these issues is still relatively high. This needs to be addressed to reassure residents that Gateshead remains a safe place and to instil confidence in the services that we deliver to tackle community safety related issues in their local neighbourhoods.
- The latest perception survey showed that 82% of respondents felt safe living in Gateshead; while 7% of people feel there had been more crime in their local area than their local authority as a whole.
- This is particularly important given that we may see an increase in the actual and perceived level of crime and ASB in the coming year – given the tight economic climate.

### Over the next 12 months our goals are to:

- Implement the revised approach to Safer Neighbourhoods
- Ensure that each of the five Safer Neighbourhood Groups develop a twelve-month evidence-led action plan for their local area. All partners/services contributing to Safer Neighbourhood Groups will be expected to take responsibility for providing data/information prior to each meeting. A minimum dataset has been introduced which sets out what information that each partner agency will be required to share on a monthly basis (e.g. top locations and areas for all crime, incidents, anti-social behaviour, fly-tipping, deliberate fires, needle finds etc).



- Embed public reassurance, community engagement and confidence work at a neighbourhood level.
- Meet the requirements of the Home Office consultation paper “More Effective Responses to anti-social behaviour” around community trigger issues.
- Ensure the implementation of proposed merged tools and powers, as proposed by the above consultation document.
- Develop more opportunities for victims to have a role and a voice within the Criminal Justice System by employing a wider range of Restorative Justice interventions.
- Promote a performance culture that is driven by victims’ positive experiences to improve public confidence.

## Minimise the Impact of Alcohol-related Harm

### Strategic Assessment Findings:

- Alcohol continues to play a major part in offending behaviour.
- 17% increase in alcohol-related crime across Gateshead – and is even higher for specific crime categories.
- Alcohol-related violence increased by 8% – and is now an influencing factor in almost half of all violent-related offences.

- Alcohol-related hospital admissions were found to be higher in Gateshead than in South of Tyne and Wear – and still remains one of the worst areas nationally.
- Gateshead conforms to regional patterns of heavy alcohol use which is evident when examining hidden harms caused by excessive alcohol consumption.
- The borough encompasses quite high rates of deprivation which is often a proxy indicator of high alcohol-related harm rates.
- There has been a slight increase in numbers of individuals engaged in structured alcohol treatment during 2009/10 (and has the potential to increase given the fragile economic climate).

Over the next 12 months our goals are to:

- Implement the recommendations contained within the Alcohol Harm Reduction strategy.
- Roll out the THINK before they DRINK scheme throughout the borough from April 2011. By running this voluntary scheme we aim to help reduce the problem of underage drinking and proxy sales.



## Protect and Support Vulnerable Victims and Communities

Strategic Assessment Findings:

- There continues to be certain communities, neighbourhoods and individuals that appear to suffer from disproportionate levels of crime and ASB.
- 88% of victims were targeted only once within this strategic period – meaning 12% were classified as ‘repeat’ victims.
- ‘Higher-level’ repeat victimisation (where the victim suffers five plus offences) tended to focus towards major retail and supermarket chains; while the number of crimes suffered by individual repeat victims increased by 30%.
- There remains a positive correlation between locations of higher victimisation and high levels of deprivation and unemployment – suggesting that deprived victims are more vulnerable/susceptible to crime; while rates of victimisation also closely mirror where offenders reside.
- Potential for increases in repeat and vulnerable victims in current climate.
- It would appear that domestic violence-related issues and hate crimes are continuing to go under-reported.

Over the next 12 months our goals are to:

- Improve our strategic approach to improving outcomes for victims. This will include the creation of a Supporting Vulnerable Victims and Communities Strategic Group, multi agency mapping of referral pathways for victims and the effective management of repeat victims via a shared approach to risk management.
- Ensure that the objectives of the Gateshead Community Resilience Strategy and Action Plan are implemented and embedded across agencies and within communities with a

particular emphasis on the objective of developing community resilience for individuals, families and neighbourhoods.

- Ensure that Safeguarding is embedded throughout the community safety agenda.
- Ensure that effective and appropriate support mechanisms are available for all victims of crime.
- Continue to deliver the government's counter terrorism agenda at a local level.
- Ensure appropriately assessed and relevant Restorative Justice interventions are available to victims of youth crime.



## Reduce Re-offending

Strategic Assessment Findings:

- 2,636 individuals were charged or cautioned in relation to 3,557 crimes that occurred in Gateshead between October 2009 and September 2010 – of which over 20% were responsible for at least one other offence during the same period.
- Increases recorded in the number of offenders re-offending (those individuals charged with two plus offences in the last 12 months).
- Almost a third of all detected crime is committed by fewer than 600 offenders.
- 80% of all offenders have previously been arrested at some point in time.
- Almost 60% reduction in first-time entrants into the Youth Offending Team.

- Probation cases commence at an average of 74 new cases per month.
- 67% of offenders currently reside in Gateshead – and the remaining offenders tend to reside in the outer-lying boundaries of joining authorities.

Over the next 12 months our goals are to:

- Implement the Integrated Offender Management approach in Gateshead.
- Investigate the housing needs of adult offenders incorporating accommodation and support.
- Work in partnership to address offenders' substance misuse.
- Work in partnership to address those attitudes of offenders which result in further offending.
- Develop a robust transitional pathway for young people known to the Youth Offending Team into adult services.
- Promote a partnership approach to Restorative Justice as a tool to reduce anti-social behaviour and crime.

## Measuring Performance

Monitoring of partnership information will be undertaken on a quarterly basis to assess performance against priorities drawn from the Strategic Assessment and to scan for emerging issues. Monitoring reports will be provided to Safer Gateshead, the Safer Stronger Communities and Culture Partnership and the Gateshead Strategic Partnership.

At the time of publication of the partnership plan there is uncertainty with regards to performance management requirements at a national and local level. The Safer Gateshead Executive Group agreed, where possible, to continue to collect and monitor our targets from 2010/11. See Performance Targets Overview on page 16.

## Performance Targets Overview

| Former National Indicator Suite targets |   |
|---|---|
| Ref                                     | Definition  |
| NI15                                    | Most serious violent crime rate   |
| NI16                                    | Serious acquisitive crime rate  |
| NI18                                    | Adult re-offending rates for those under probation supervision  |
| NI19                                    | Rate of proven re-offending by young offenders  |
| NI20                                    | Assault with less serious injury crime rate   |
| NI28                                    | Serious knife crime rate  |
| NI29                                    | Gun crime rate per 1000 population  |
| NI30                                    | Re-offending rate of prolific and other priority offenders  |
| NI32                                    | Repeat incidents of domestic violence   |
| NI33a                                   | Arson Incidents: deliberate primary fires per 10,000 population   |
| NI33b                                   | Arson Incidents: deliberate secondary fires per 10,000 population   |
| NI34                                    | Domestic Violence – Murder  |
| NI38                                    | Drug related (Class A) offending rate   |
| NI39                                    | Rate of Hospital Admissions per 100,000 for Alcohol Related Harm  |
| NI40                                    | Number of drug users recorded as being in effective treatment   |
| NI47                                    | People killed or seriously injured in road traffic accidents  |
| NI48                                    | Children killed or seriously injured in road traffic accidents  |
| NI49a                                   | Number of primary fires and related fatalities and non-fatal casualties: Total number of primary fires per 100,000 population   |
| NI49b                                   | Number of primary fires and related fatalities and non-fatal casualties: Total number of fatalities due to primary fires per 100,000 population                       |
| NI49c                                   | Number of primary fires and related fatalities and non-fatal casualties: Total number of non-fatal casualties (excluding precautionary checks) per 100,000 population |
| NI111                                   | First time entrants to the Youth Justice System aged 10 – 17  |
| NI143                                   | Offenders under probation supervision living in settled and suitable accommodation at the end of their order or licence   |
| NI144                                   | Offenders under probation supervision in employment at the end of their order or licence  |
| Local Management Indicators             |   |
| Ref                                     | Definition  |
| M11                                     | Number of reports on the ARCH Hate Crime reporting system   |
| M12                                     | Criminal damage per 1000 population   |

# Safer Gateshead

Safer People, Safer Communities



**If you would like any more information or to discuss this document, please contact the Community Safety Team on 0191 433 3243.**

**If you would like this information in a different format such as large print, Braille, on audio cassette/CD/MP3 or in a different language, please call 0191 433 3990.**