

Safer Gateshead

Safer People, Safer Communities

Safer Gateshead Partnership Plan 2009 Refresh

April 2009



Contents

	Page
Introduction	3
2008/09 Progress	4
Partnership Priorities Review	5
Performance Targets Update	7

Introduction

The Safer Gateshead Partnership Plan 2008/09 – 2010/11 was published in April 2008. The Plan aligns with Gateshead's Next Generation Local Area Agreement and contributes towards Vision 2030, Gateshead's Sustainable Community Strategy.

We have a statutory requirement to produce an annual Strategic Assessment and Partnership Plan. The second Safer Gateshead Strategic Assessment was completed in December 2008 and forms part of an intelligence-led approach to community safety, which enables a more focussed, resource-effective and partnership-oriented delivery of options to tackle problems. The chosen assessment period was the 12 months October 2007 – September 2008.

The Strategic Assessment 2008 confirmed some of our 2008/09 – 2010/11 priorities and identified subsequent additional priorities. These amended 2009 Partnership Priorities were then confirmed via comprehensive community consultation during January 2009.

This 2009 Partnership Plan refresh should be read in conjunction with the full Partnership Plan. The refresh outlines progress made within the first year of the Plan, reviews key priorities and highlights updated performance targets.

The aim of the Partnership Plan remains the same: 'to enhance our partnership approach in Gateshead, working together to provide a more co-ordinated approach to eventually enable everyone in Gateshead to feel safe and secure'.



A handwritten signature in black ink, appearing to read 'D Napier'.

*Councillor David Napier:
Chair of the Safer Stronger Communities and Culture Partnership*

2008/09 Progress

In summary, the 2008 Strategic Assessment identified the following crime trends:

- Total crime decreased by 13% in the 12 months from October 2007 to September 2008 compared to the same period 2006-2007
- Successful reductions were seen in most major crime categories. The greatest volume decreases were achieved in criminal damage, violence and drug offences.
- There were increases in some acquisitive crime categories.

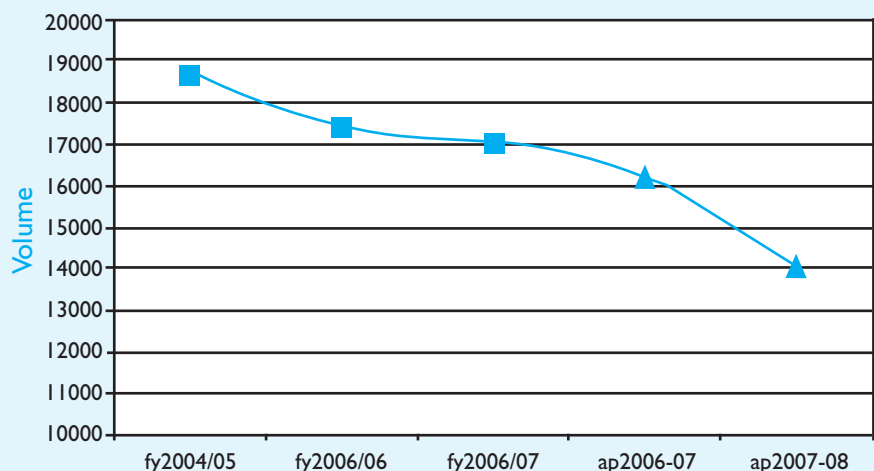
The longer-term trend show a continued decrease of all crime (see diagram below).

There has been significant quantitative progress made against the eight priorities identified within the Safer Gateshead Partnership Plan 2008/09 – 2010/11:

- Anti-Social Behaviour - police incidents decreased by 24%. There was a decrease of 11% of Place Survey respondents who thought ASB was a problem in their local area

- Alcohol - 10% fewer respondents thought drunk or rowdy behaviour was a problem in the Place Survey
- Violence - violence against the person crimes decreased by 28%
- Hate Crime - there was a 21% decrease in racially or religiously aggravated crime reports
- Class A Drugs - there was a 30% decrease in police recorded drug offences. The Place Survey told us that perception of drug use or dealing as a problem decreased by 27%
- Environmental Crime - there was a 6% decrease in flytipping and 49% less graffiti reported to the council
- Fear of Crime/Reassurance - the Place Survey told us that the majority of residents feel safe outside both during the day (88%) and at night (52%)
- Reducing Offending and Re-offending - offending by the prolific offender cohort was 30% lower than the predicted target rate

All Crime FY 2004/05 - AP 2007-08



Long-term crime trend
2004/05 – 2007-08

(Note that the chart is composed of financial years (square markers) for historical data and assessment periods (triangles) for 2006-07 and 2007-08. Consequently, comparisons can also be made between April-March 2006/07 and October-September 2006-07).

Partnership Priorities Review

Draft priorities were identified by the Strategic Assessment in terms of volume, increase, harm and national importance. The draft priorities derived from the Strategic Assessment were then subsequently consulted upon during January 2009 with the Gateshead Strategic Partnership, all five Area Forums and with Gateshead residents with support from a range of Council Services and the Involvement Forum. Consultation on the draft priorities elicited 203 returns and all priority problems and cross-cutting issues were confirmed.

Priority problems and reasons for inclusion

- **Anti-Social Behaviour:** Most people have experienced this. It has a negative impact on quality of life and fear of crime. It was the top consultation priority.
- **Violence (including domestic violence):** is the third largest volume crime problem; Assault with Less Serious Injury is an improvement target. It was the 2nd highest consultation priority.
- **Class A drugs:** There is a demonstrated need due to the number of users we're aware of (the actual number of users will be far higher). It is linked to acquisitive crime. Discarded needles pose a public health hazard and degrade the environment. It was the 3rd top consultation priority.
- **Vandalism (criminal damage):** is the largest volume crime problem. It impacts on most people (they are aware of it even if not

directly victimise themselves). It adversely affects quality of life and fear of crime. It was the 4th highest consultation priority.

- **Acquisitive crime (including Most Serious Acquisitive Crime, shoplifting etc):** is the largest volume crime problem if all categories are combined. Other Theft alone is the second largest volume crime problem. There were increases in Burglary Dwelling, Theft from Motor Vehicles and Other Theft. Acquisitive crime is linked to drug-using offenders. It was the 5th highest consultation priority.
- **Environmental crime:** This is a major quality of life and public health issue. It was the 6th highest consultation priority.

Cross-cutting issues and reasons for inclusion

- **Protection of Children:** There has been a national review of child protection measures in wake of the Baby P case. Local findings show that most children on child protection measures come from a family with a history of Domestic Violence. There is a need to also consider the effects on children of drug use / criminality / victimisation in the home environment, school and elsewhere.
- **Alcohol:** this is a demonstrable problem and contributes to health inequalities which can affect not only an individual's personal health but also affect their ability to access employment, housing, education and skills

training. The social impacts of alcohol are directly linked to anti social behaviour and related crime issues, there is a strong link between alcohol, Domestic Violence and wider violent crime.

- **Hate and discrimination:** Hate crime poses a threat to community cohesion and can fragment society if unchecked.
- **Reducing offending and reoffending:** Many offences are perpetrated by a few individual offenders. Less offending means fewer victims.
- **Targeting vulnerable neighbourhoods:** Problems are not homogenously dispersed: some localities have particularly high levels of crime and disorder.
- **Reassurance:** Fear of crime is still disproportionately higher than the risk of victimisation.
- **Think Family:** Within the Safer Gateshead Plan 2008/09 – 2010/11, it was noted that we need to create a family centred approach to tackling Anti-Social Behaviour. Within this refresh it is recognised that the Think Family approach should be adopted across all Safer Gateshead workstreams.
- **Community Resilience:** This is the ability to anticipate, prevent, prepare for, respond to and recover quickly from emergencies affecting organisations, businesses, individuals, families, neighbourhoods and communities.
- **Prevent:** Partners within Safer Gateshead have a role in implementing the national Preventing Violent Extremism agenda at a local level.

Performance Targets Update

Local Area Agreement Improvement Targets 2008/09 – 2010/11					
Ref	Definition	Most Recent Baseline	Target 2009/10	Target 2010/11	Target 2011/12
NI16	Serious acquisitive crime rate	2007/08 12.93	12.42	12.17	TBC
NI17	Perceptions of anti-social behaviour	2008/09 19%	No survey	14%	No survey
NI19	Rate of proven reoffending by young offenders	N/A	-3.5%	-4%	TBC
NI20	Assault with less serious injury crime rate	2007/08 6.81	08/09 baseline -4%	09/10 baseline -4%	TBC
NI30	Re-offending rate of prolific and other priority offenders	2008/09 289	231 (20% reduction)	TBC	TBC
NI38	Drug related (Class A) offending rate	2008/09 6 month baseline 1.13	Average 10.5% below baseline across 2009/10 – 2010/11 cohorts		TBC
NI39	Rate of Hospital Admissions per 100,000 for Alcohol Related Harm	2007/08 2322	2972 (6.5% reduction)	3090 (4% reduction)	TBC
NI49a	Number of primary fires and related fatalities and non-fatal casualties: Total number of primary fires per 100,000 population	2007/08 362.27	378.37	374.59	370.84
NI49b	Number of primary fires and related fatalities and non-fatal casualties: Total number of fatalities due to primary fires per 100,000 population	2007/08 1.57	0	0	0
NI49c	Number of primary fires and related fatalities and non-fatal casualties: Total number of non-fatal casualties (excluding precautionary checks) per 100,000 population	2007/08 4.2	15.31	15.15	15
NI111	First time entrants to the Youth Justice System aged 10 – 17	N/A	TBC	TBC	TBC

Remaining National Suite Indicator Targets					
Ref	Definition	Most Recent Baseline	Target 2009/10	Target 2010/11	Target 2011/12
NI15	Most Serious violent crime rate	N/A	2008/09 -1%	2008/09 -2%	TBC
NI18	Adult re-offending rates for those under probation supervision	2007/08 12.3%	Reduction in reoffending rate (- %)	TBC	TBC
NI21	Dealing with local concerns about anti-social behaviour and crime by the local council and police	2008/09 32.6%	No survey	36.6%	No Survey
NI22	Perceptions of parents taking responsibility for the behaviour of their children in the area	2008/09 25.9%	No survey	29.9%	No survey
NI23	Perceptions that people in the area treat one another with respect and consideration to be a problem	2008/09 32.1%	No survey	28.1%	No survey
NI26	Specialist support to victims of a serious sexual offence	N/A	Deferred	Deferred	Deferred
NI27	Understanding of local concerns about anti-social behaviour and crime by the local council and police	2008/09 32.4%	No survey	36.4%	No survey
NI28	Serious knife crime rate	N/A	Maintain 2008/09 rate	Maintain 2008/09 rate	TBC
NI29	Gun crime rate per 1000 population	2007/08 0.074 (Forcewide)	TBC	TBC	TBC
NI32	Repeat incidents of domestic violence	N/A	TBC	TBC	TBC
NI33a	Arson Incidents: deliberate primary fires per 10,000 population	2007/08 baseline 15.23	17.86	17.68	17.50
NI33b	Arson Incidents: deliberate secondary fires per 10,000 population	2007/08 baseline 58.33	87.07	86.20	85.34
NI34	Domestic Violence – Murder	2007/08 0	0	0	0
NI35	Building resilience to violent extremism	TBC	Improve	Improve	TBC
NI36	Protection against terrorism attack	N/A	TBC	TBC	TBC
NI37	Awareness of civil protection arrangements in the local area	2008/09 17%	No survey	21%	No survey

Continued overleaf

Remaining National Suite Indicator Targets - continued

Ref	Definition	Most Recent Baseline	Target 2009/10	Target 2010/11	Target 2011/12
NI40	Number of drug users recorded as being in effective treatment	2007/08 918	964	982	TBC
NI41	Perceptions of drunk or rowdy behaviour as a problem	2008/09 32.7%	No survey	28.7%	No Survey
NI42	Perceptions of drug use or drug dealing as a problem	2008/09 32.0%	No survey	28.0%	No survey
NI43	Young people within the Youth Justice System receiving a conviction in court who are sentenced to custody	2007/08 3.6%	<5%	<5%	<5%
NI44	Ethnic composition of offenders on Youth Justice System disposals	2006/07 0.4%	Reduce	Reduce	Reduce
NI45	Young Offenders engagement in suitable education, training and employment	2007/08 86.2%	90%	90%	90%
NI46	Young offenders access to suitable accommodation	2007/08 98.2%	100%	100%	100%
NI47	People killed or seriously injured in road traffic accidents	2007/08 -3%	5.9%	0%	TBC
NI48	Children killed or seriously injured in road traffic accidents	2007/08 33%	6.7%	0%	TBC
NII43	Offenders under probation supervision living in settled and suitable accommodation at the end of their order or licence	2007/08 65%	TBC	TBC	TBC
NII44	Offenders under probation supervision in employment at the end of their order or licence	2007/08 41%	TBC	TBC	TBC

Local Indicators

Ref	Definition	Most Recent Baseline	Target 2009/10	Target 2010/11	Target 2011/12
CBS?	Criminal Damage per 1000 population	2007/08 22.66	25.5	25	TBC
BV174	The number of racial incidents reported to the local authority and subsequently recorded (per 100,000 population)	2007/08 86.6	80	75	TBC
CBS3b	% of residents surveyed who feel 'fairly safe' or 'very safe' outside during the day	2008/09 88%	No survey	92%	No survey
CBS3a	% of residents surveyed who feel 'fairly safe' or 'very safe' outside after dark	2008/09 52%	No survey	56%	No survey
BV225	Domestic Violence Indicator Summary	2007/08 81.82	91%	91%	TBC