

**For further information contact:**

**Bill Quay Community Farm**

Hainingwood Terrace

Bill Quay

Gateshead NE10 0UE

Tel: 0191 433 5780

Email: [billquayfarm@gateshead.gov.uk](mailto:billquayfarm@gateshead.gov.uk)

**Countryside Team**

Thornley Woodlands Centre

Derwent Walk Country Park

Rowlands Gill

Tyne & Wear NE39 1AU

Tel: 01207 545 212

Email: [countryside@gateshead.gov.uk](mailto:countryside@gateshead.gov.uk)



gateshead events in the  
**countryside**

**January - April 2012**

A guide to getting out  
and about in Gateshead  
for adults, families & children

[www.gateshead.gov.uk](http://www.gateshead.gov.uk)

 **Gateshead**  
Council



# hello

# farm club

10am - 12noon

Saturday's 14 Jan, 11 Feb, 10 Mar & 14 Apr

Pull on your wellies and join us at Bill Quay Farm for a chance to muck in and experience first hand what farm life is all about.

**8 - 16 yrs**

**Only £1 - Limited places, book in advance**

**Contact: 0191 433 5780**



and welcome to Outdoor Events, your guide to getting out and about in Gateshead's countryside for adults, families and children. This handy guide details a fantastic range of activities for everyone to enjoy at one of our countryside sites including Bill Quay Community Farm, Saltwell Park and Thornley Woodlands Centre from January to April 2012.

Why not join us for some fun on the farm, get crafty making bird boxes or feeders for our little feathered friends or just get out and stretch your legs on one of our countryside walks. With activities for all the family there's so much more inside, so make sure you don't miss out on the many events taking place.

For further information on any of the activities listed, contact the Countryside Team.

## Important Information

- Please wear clothing and footwear suitable to the event you are attending. For children's activities - dress for mess!
- Children under 8 years must be accompanied by an adult at all events.
- For details about ease of access please contact the event organiser.
- For up to date bus information call Nexus Traveline on: 0871 200 2233.

Correct at time of print, subject to change.

# january

## New Year Walk

Sunday 8 January 10am - 1pm  
Watergate Forest Park - meet in main car park  
Join the Rangers for a refreshing 6 mile New Year walk starting at Watergate and taking in the wider countryside (with steps & stiles).  
Adults and children 8 yrs +  
£1 - Book in advance  
Contact: 01207 545 212

## Farm Club

Saturday 14 January - see page 2 for details

## Spinning a Yarn

Saturday 14 January 1pm - 3pm  
Bill Quay Community Farm  
Try your hand at spinning, felting and weaving with our Wool Craft group.  
Family event  
Free - No booking required, just turn up!  
Contact: 0191 433 5780

## Thornley Guide in the Hide

Sunday 15 January 10am - 3pm  
Thornley Woodlands Centre Bird Hide  
Come and join the Rangers in the hide to see the winter visitors to Thornley Woods.  
Refreshments are available.  
Family event  
Free - No booking required, just turn up!  
Contact: 01207 545 212

## Bird Dinners

Saturday 21 January 11am - 3pm  
Saltwell Park Stable Block  
Help to feed the birds this winter by making your own feeder. You can also mix up some bird cake and fill it up with food too!  
Family event  
£2 - No booking required, just turn up!  
Contact: 01207 545 212



## Farmhouse Breakfast Week

Sunday 22 - Saturday 28 January  
11.00 - 16.00  
Bill Quay Community Farm Café

Come down and join us for a celebration of local food. We'll be serving home cured bacon and farm fresh eggs to try and buy, down on the farm.

Open to all  
No booking required, just turn up!  
Contact: 0191 433 5780



# Take a walk on the Wildside

With over half of Gateshead made up of countryside, there's lots to see and do. Look out for the new wild and wonderful creatures carved out of felled trees as you walk around Thornley and Paddock Hill Woods.

For information on walks, wildlife trails and the sculptures contact:

**Thornley Woodlands Centre**  
Derwent Walk Country Park,  
Rowlands Gill, NE39 1AU  
Tel: 01207 545 212

# february

## Eat your 'art out

Sunday 5 February 1pm - 3pm  
Bill Quay Community Farm  
Get creative and make your own vegetable print masks and posters.  
Open to all  
£1 - Limited places, book in advance  
Contact: 0191 433 5780

## Farmers Market

Saturday 11 February  
10am - 3pm  
Bill Quay Community Farm  
A feast of farming with local food stalls, tasters, demonstrations, music and crafts.  
Family Event  
Free - No need to book - just turn up!  
Contact: 0191 433 5780

## Farm Club

Saturday 11 February - see page 2 for details

## Half Term Happenings

Monday 13 - Friday 17 February 10am - 2pm  
Thornley Woodlands Centre  
Pick up a book of activities to carry out on a walk in the countryside and get crafty by making something to take home.  
Family event  
£1 - No booking required, just turn up!  
Contact: 01207 545 212



## Valentines Vibes

Monday 13 February 12noon - 2pm  
Bill Quay Community Farm Café  
Fall in love with local food. Decorate cupcakes to melt the heart.  
Family event  
£1 - Limited places, book in advance  
Contact: 0191 433 5780

## Earth Art

Tuesday 14 February 11am - 3pm  
Saltwell Park Stable Block  
Come along and make your own dream catcher using willow and natural materials provided by the park.  
Family event  
£1 - No booking required, just turn up!  
Contact: 01207 545 212

## Bird Box Making

Tue 14, Wed 15 and Thur 16 February  
1pm - 3pm  
Bill Quay Community Farm  
Grand designs for your garden birds. Make a bird box for our feathery friends.  
Open to all  
£3 - Limited places, book in advance  
Contact: 0191 433 5780

## Ranger Rescue

Wednesday 15 February  
10am - 12noon  
Watergate Forest Park - meet in main car park  
Help the rangers look after your local park and get involved with practical winter tasks. Tools will be provided but please bring gloves for the little ones.  
Family event  
Free - Limited places, book in advance  
Contact: 01207 545 212

## Bird Box Making

Thursday 16 February  
11am - 3pm  
Saltwell Park Stable Block  
Why not lend a hand to our house-hunting feathered friends! Build your own wooden bird box to take home and help the birds this springtime.  
Family event  
£4 per box  
No booking required, just turn up!  
Contact: 01207 545 212

## Saltwell Park History Walk

Tuesday 21 February  
10am - 12noon  
Saltwell Park - meet at the Little Theatre Gate, East Park Road  
A guided 1.5 mile walk around the park learning about the park's history.  
Adults only  
£1 - Limited places, book in advance  
Contact: 01207 545 212



## Preparing for Lambing

Sunday 26 February 1pm - 3pm  
Bill Quay Community Farm

Help set up the lambing pens then round up the flock. Open to all  
Free - Limited places, book in advance  
Contact: 0191 433 5780

## Bird Box & Feeder Making

Sunday 26 February  
1pm - 3pm  
Swalwell Visitor Centre, Hexham Road (behind Blaydon Rugby Club)  
A chance to help birds thrive in your garden by making nesting boxes and feeders, with Countryside Rangers on hand for help and advice.  
Family event  
£3.50 per box / feeder  
No booking required, just turn up!  
Contact: 01207 545 212

# march

## Farm Club

Saturday 10 March - see page 2 for details

## Open Lambing Shed

Daily throughout March 12noon - 5pm  
Bill Quay Community Farm  
Meet the new arrivals in the Baaaaarn!  
Open to all  
Free - No booking required, just turn up!  
Contact: 0191 433 5780

## Willow Weaving

Saturday 17 March 1pm - 3pm  
Bill Quay Community Farm  
Weave willow into baskets, wands, fish and birds.  
Open to all  
£1 - Limited places, book in advance  
Contact: 0191 433 5780

## Pedal Power

Sunday 25 March 1pm - 3pm  
Bill Quay Community Farm  
Recycle y'bike on site for safety checks and maintenance.  
Open to all  
£2 - Limited places, book in advance  
Contact: 0191 433 5780



## Sainsbury's Sport Relief Mile

Sunday 25 March  
From 9.30am  
NewcastleGateshead Quayside

The Sainsbury's Sport Relief Mile is back again and it's taking place here in NewcastleGateshead! Whether you do one, three or six miles, you can get sponsored to walk, jog, sprint, or even hop. From tiny toddlers to top-notch sports pros everyone is guaranteed to have a brilliant day out. The money raised will help transform people's lives right here in NewcastleGateshead, across the UK and in the world's poorest countries. So what are you waiting for, sign up today!

Race entry fee applies. Enter by visiting [www.sportrelief.com](http://www.sportrelief.com)  
Contact: 0191 433 6900

# april

## Open Lambing Shed

Daily throughout April 12noon - 5pm  
Bill Quay Community Farm  
Meet the new arrivals in the Baaaaarn!  
Open to all  
Free - No booking required, just turn up!  
Contact: 0191 433 5780

## Easter Trail

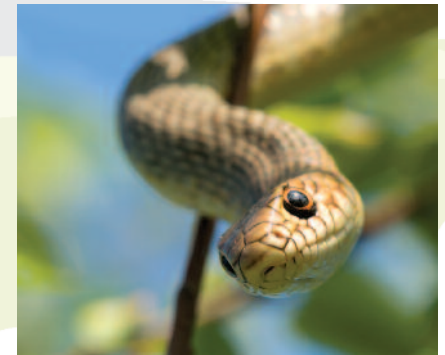
Monday 2 - Friday 13 April  
10am - 4pm  
Bill Quay Community Farm  
Collect your pack from the office and explore in and around the farm with activities along the way.  
Open to all  
£1 - No booking required, just turn up!  
Contact: 0191 433 5780

## Spring Stroll

Tuesday 3 April 10am - 12noon  
Saltwell Park Stable Block  
A guided ¾ mile walk with Earth Walk inspired activities for parents and children.  
Adults and children under 6 yrs  
£2 - Limited places, book in advance  
Contact: 01207 545 212

## Make an Easter Card

Tuesday 3 April 10am - 3pm  
Thornley Woodlands Centre  
Come along and make a card to send out Easter Greetings. Why not take a spring walk in the woods while you are here!  
Open to all ages  
20p per card -  
No booking required, just turn up!  
Contact: 01207 545 212



## Bugs 'n' Stuff - Meet the Mini Beasts!

Thursday 5 April  
10am - 11am 8 yrs +  
11.30am - 12.30pm 3 - 7 yrs  
Saltwell Park Training Centre  
(Next to the top bowling green.)  
Come and meet some of the weird and wonderful creatures of the insect, amphibian and reptile world. Some of these creatures are only seen deep in the jungle so come and learn all about their homes and lives and even get a chance to hold them.  
£3.50 - Limited places, book in advance.  
(only one adult per child)  
Contact: 01207 545 212

## Bread Week

Monday 9 - Sunday 15 April  
Bill Quay Community Farm Café  
Artisan breads served in the café and an open air bake to try and buy.  
Free Family Event - No booking required.  
Contact: 0191 433 5780

## Pond Populations!

Tuesday 10 April 11am - 3pm  
Saltwell Park Stable Block  
Our resident pond creatures are beginning to make an appearance, so come and discover some of the amazing creatures that live beneath the water and make your very own pond to take away with you. Family event £1 - No booking required, just turn up!  
Contact: 01207 545 212

## Treasure Trail

Wednesday 11 April  
1pm - 3pm drop in any time  
Thornley Woodlands Centre  
Follow the clues and explore the woods to complete the trail and win a prize. Family event £2 - No booking required, just turn up!  
Contact: 01207 545 212

## Farm Club

Saturday 14 April - see page 2 for details

## Spring Flower Walk at Longacre Wood

Sunday 29 April 10.30am - 12noon  
Longacre Wood - meet at Ravensworth Arms car park, Lamesley, NE11 0ER  
Join us for a 2 mile spring flower walk around Gateshead's best Bluebell wood.  
Adults and children aged 8 yrs +  
£1 - Limited places, book in advance  
Contact: 01207 545 212



## Saltwell Park Show

Saturday 14 & Sunday 15 April  
10am - 4pm  
Saltwell Park

Chase away the winter blues and join the springtime celebrations in our beautiful park. With lots of attractions including horticultural and floral displays and craft stalls. There'll be street theatre and children's workshops to entertain the whole family too. Take advantage of the free park and ride running every 15 minutes from Gateshead Civic Centre.

Free family event  
Contact: 0191 433 6900  
or [events@gateshead.gov.uk](mailto:events@gateshead.gov.uk)

# at a glance

## January

Sun 8 New Year Walk  
Sat 14 Farm Club  
Sat 14 Spinning a Yarn  
Sun 15 Thornley Guide in the Hide  
Sat 21 Bird Dinners  
Sun 22 Farmhouse Breakfast Week  
Mon 23 Farmhouse Breakfast Week  
Tue 24 Farmhouse Breakfast Week  
Wed 25 Farmhouse Breakfast Week  
Thur 26 Farmhouse Breakfast Week  
Fri 27 Farmhouse Breakfast Week  
Sat 28 Farmhouse Breakfast Week

## February

Sun 5 Eat your 'art out  
Sat 11 Farmers Market  
Sat 11 Farm Club  
Mon 13 Half Term Happenings  
Mon 13 Valentines Vibes  
Tue 14 Half Term Happenings  
Tue 14 Earth Art  
Tue 14 Bird Box Making  
Wed 15 Bird Box Making  
Wed 15 Ranger Rescue  
Wed 15 Half Term Happenings  
Thur 16 Bird Box Making  
Thur 16 Half Term Happenings  
Thur 16 Bird Box Making  
Fri 17 Half Term Happenings  
Tue 21 Saltwell Park History Walk  
Sun 26 Bird Box & Feeder Making  
Sun 26 Preparing for Lambing

## March

Daily Open Lambing Shed  
Sat 10 Farm Club  
Sat 17 Willow Weaving  
Sun 25 Pedal Power  
Sun 25 Sainsbury's Sport Relief Mile

## April

Daily Open Lambing Shed  
Mon 2 Easter Trail  
Tue 3 Spring Stroll  
Tue 3 Easter Trail  
Tue 3 Make an Easter Card  
Wed 4 Easter Trail  
Thur 5 Bugs 'n' Stuff - Meet the Mini Beasts  
Thur 5 Easter Trail  
Fri 6 Easter Trail  
Sat 7 Easter Trail  
Sun 8 Easter Trail  
Mon 9 Easter Trail  
Mon 9 Bread Week  
Tue 10 Pond Populations!  
Tue 10 Easter Trail  
Tue 10 Bread Week  
Wed 11 Treasure Trail  
Wed 11 Easter Trail  
Wed 11 Bread Week  
Thur 12 Easter Trail  
Thur 12 Bread Week  
Fri 13 Easter Trail  
Fri 13 Bread Week  
Sat 14 Farm Club  
Sat 14 Bread Week  
Sat 14 Saltwell Park Show  
Sun 15 Saltwell Park Show  
Sun 15 Bread Week  
Sun 29 Spring Flower Walk