

Tackling ASB and supporting Victims in Gateshead

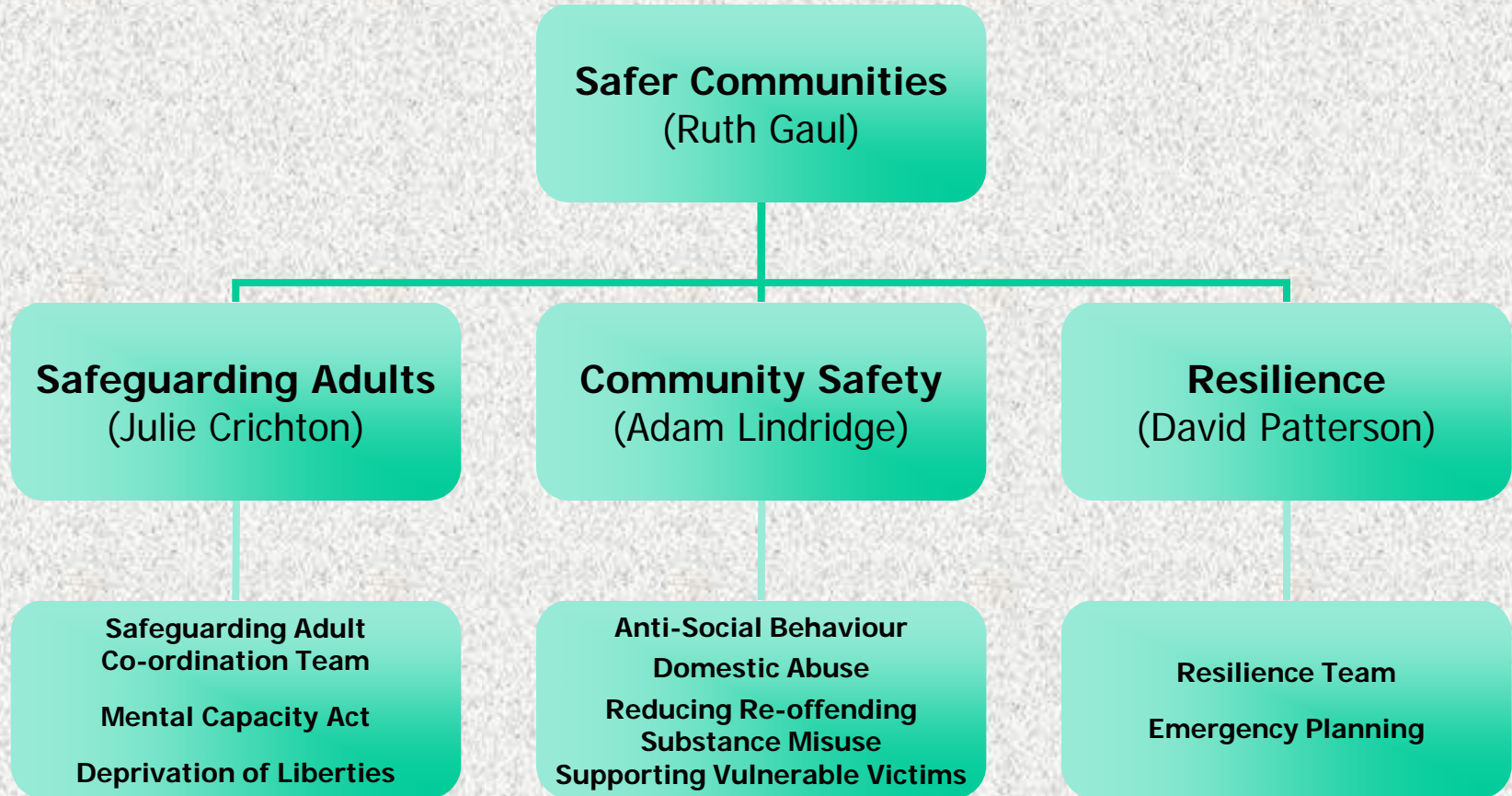
Mandy Huston
Safer Communities Co-ordinator
0191 4333990

20th September 2013

Aims and Objectives

- ◆ Welcome and Introductions
- ◆ Safer Communities Team Structure
- ◆ Overview of the Safer Communities Team
- ◆ Key partners we work with
- ◆ Safer Neighbourhood Arrangements
- ◆ Supporting Vulnerable Victims and Communities
- ◆ Benefits of joint working

Safer Communities Team



Overview of the Safer Communities Team

◆ Community Safety Team

- Responsible for co-ordination and response to ASB in Gateshead, including supporting vulnerable victims
- Provides specialist advice and support to victims of domestic abuse
- Develops appropriate strategies to tackle drug and alcohol misuse, linked to ASB

◆ Safeguarding Adults Team

- Specialist team of safeguarding co-ordinators who respond to safeguarding adult alerts as well as mental capacity act cases

◆ Resilience Team

- Responsible for the co-ordination and response to emergency situations within the borough, including terrorism and natural disaster situations

Key partners we work with

- ◆ Northumbria Police
- ◆ Tyne and Wear Fire and Rescue Service
- ◆ Probation Service
- ◆ The Gateshead Housing Company
- ◆ Private Sector Housing Team (Including GPLA)
- ◆ Local Environmental Services
- ◆ Youth Offending Team
- ◆ Health & Social Care Services
- ◆ Charitable Organisations
- ◆ Local Businesses and Community Groups

Community Safety

Safer Neighbourhood Arrangements

◆ Graded Response

- Education
- Formal Action
- Joint approach
- Enforcement Action

◆ Neighbourhood Tasking Groups

- Five Neighbourhood Tasking Groups
- Meet on a fortnightly basis
- Chaired by Neighbourhood Police Sergeants
- Use a multi agency operational approach
- Review activity by agencies to Identify ways to prevent persistent crime and ASB
- Monitor vulnerable victims

◆ Safer Neighbourhood Groups

- Five Safer Neighbourhood Groups
- Meet on a bi-monthly basis
- Chaired by Neighbourhood Police Inspectors
- Use a multi agency strategic approach
- Support Neighbourhood Tasking Groups and review long term Issues

◆ ASB Panel

- Meets on a monthly basis
- Chaired by Community Safety Team
- Use a multi agency approach with key partners
- Review activity by agencies to Identify the most appropriate tools to address persistent crime and ASB
- Consults with partners regarding proposed legal actions to tackle specific individuals' behaviour

Supporting Vulnerable Victims and Communities

- ◆ Partnership approach to supporting victims and communities
- ◆ Risk assessment tool used to determine risk to the victim
- ◆ Information relating to 'High Risk' victims shared with partners through multi agency meetings
- ◆ Holistic approach to resolving ASB issues

Benefits to working in partnership

- ◆ Co-ordinated approach by Community Safety Team to identifying FG families
- ◆ Minimises duplication and best use of resources
- ◆ Access to knowledge and experience from other agencies
- ◆ Wider information sharing opportunities
- ◆ Opportunities to consult regarding ASB issues
- ◆ Access to wider resources to tackle ASB issues through neighbourhood tasking
- ◆ Access to ASB performance information
- ◆ Information about future ASB & Community Safety Strategic and Operational developments in Gateshead
- ◆ Access to specialist advice from the Safer Communities Team

QUESTIONS

???